

# PORTABLES PLAYBOOK



**CONNOR<sup>®</sup> SPORTS**  
*Where Champions Play<sup>™</sup>*

# Contents

What is the Portables Playbook?	3
About This Guide	4
<b>Resources</b>	
Is a portable sports floor the right system for you?	5
Connor Sports QuickLock Portable Floors	6
About Connor Sports	8
QuickLock Portable System Options	9
QuickLock vs. the Competition	10
Requesting Samples	11
Timeline of Events (At a Glance)	12
Court Layouts   Graphics & Color Formats & Approvals	13
Customer Deliverables	15
Accessories & Add-Ons	16
Maintenance & Longevity	17
Case Studies & References	18
NCAA Tournament Courts	19
Installation, Removal & Storage	20
Technical Specifications & Safety	21

## Appendix

QuickLock Classic	23
QuickLock Fusion	25
Ramp Options	27
Maple Grades	28
Accessories Specifications	29
QuickLock Vs. The Competition	31
FIBA Certificate of Approval	32
Installations and References	33
Panel Layout	35
Technical Drawing	36
Color Layout/Court Mockup	37
Installation Instructions	38
Caring for your Hardwood System	39
Warranty Example	40

CLICK TO RETURN  
TO CONTENTS PAGE

# What is the Portables Playbook?

Connor® Sports' focus on innovation has led to the development of the QuickLock™ portable systems. This innovation positioned us as the trusted choice for the NCAA® March Madness® and Final Four®, the NBA®, the WNBA®, hundreds of NCAA Division I programs, as well as global stages including FIBA World Championships and the Summer Olympic Games. The Portables Playbook serves as a comprehensive guide, designed to help our partners and future customers understand best practices for lasting use of your floor and what Connor Sports will need to bring your design to life.



# About This Guide

The Portables Playbook is your one stop resource for planning, specifying and operating a high-performance portable hardwood court. Created by the engineers and designers at Connor Sports, this guide blends technical precision with practical advice, giving you everything you need to make an informed decisions.

## Purpose and Use

- **Design Support:** Learn what size and how to configure a portable court to fit your venue, from choosing MFMA maple grades to understanding substrate and venue specific requirements.
- **Technical Guidance:** Access engineering insights, design specifics and best practices unique to portable floors.
- **Operating Protocols:** Learn industry proven standards for installation, removal, storage and maintenance.
- **Customization and Branding:** Explore options for graphic applications, approved finishes and accessories to showcase your school or team's identity without compromising performance.
- **Procurement and Logistics:** Understand timelines, shipping requirements and budget considerations for purchasing and receiving your QuickLock court system.

## Why the MFMA Matters

The Maple Flooring Manufacturers Association sets the benchmark for material quality, grading and manufacturing precision in hardwood sports flooring. As an MFMA member, Connor Sports adheres to these standards by:

- Imposing strict grading rules on our northern hard maple boards
- Undergoing third party inspections to verify lumber quality and manufacturing processes
- Promoting sustainable forestry and responsible sourcing
- Providing technical resources that help architects and builders maintain high installation standards

MFMA certification isn't just a stamp of approval. It is your assurance that every Connor Sports portable court delivers the durability, safety and performance demanded at the highest levels of sport.



Use this playbook as a trusted companion throughout your project. If questions arise that aren't addressed here, our team of portable court specialists is ready to assist you.

# Is a portable sports floor the right system for you?

Choosing a portable sports floor involves more than deciding on a product; it's about ensuring the solution matches how you use and manage your facility. Use these questions to guide your assessment.



## Event Types

What type of events are hosted at your venue/arena/stadium?

---



## Turnover Frequency and Duration

How often do you expect to install and remove the court in a season?

---



## Climate and Storage

Will you have a climate-controlled storage space available to store the floor when it is not being used?

---



## Relocation and Leased Facilities

Will you need to move the floor to different venues throughout the course of the year?



Answering these questions will clarify whether a portable hardwood floor aligns with your programming needs and facility capabilities.

# Connor Sports QuickLock Portable Floors

The Connor Sports QuickLock portable floor delivers the performance and durability of a permanent gym floor with the flexibility to install, remove and transport the surface as needed. These modular systems are ideal for multi use arenas, leased facilities and traveling tournaments where space must be converted quickly between sports, concerts or other events.



## Built for Performance and Flexibility

Connor Sports QuickLock portable courts are engineered to replicate the playability of a permanent floor while offering true portability. Key construction details include:

- **High grade materials:** Each panel is built with MFMA certified northern hard maple bonded to a plywood subfloor. Laminated sleepers run the length of the panel to control vibration and create a rigid picture frame base.
- **Secure connections:** A continuous steel tongue slides into a high impact polyethylene groove to align and lock panels tightly. Quick pins (integrated on QL Fusion and inserted on QL Classic) secure the connection.
- **Resilient pads:** Optional PowerShok™ pads can be added under the panels to enhance shock absorption and athlete comfort.
- **Crafted to last:** The use of thicker steel and durable polymer in the tongue and groove interface distinguishes QuickLock from others; allowing for a lifespan that is only determined by your team, tournament, or arena's need to change the court design.

## Handling and Storage

Portable courts are designed for straightforward assembly and disassembly. Each panel is numbered, which helps your crew follow the correct sequence during installation. After the event, the panels can be unlocked, lifted and stacked on carts for efficient transport. A climate controlled storage area is required to keep the wood stable between game play. During the offseason or between events, the floor can be re-assembled, sanded, sealed, painted and finished like any other hardwood surface.

## Planning and Customization

A standard collegiate or professional portable court measures about 60 feet by 120 feet. To reach this size, manufacturers supply roughly 230 full panels plus a small number of half size panels for the ends. The modular design allows courts to be made larger or smaller in four foot increments to fit your venue, making each QuickLock floor truly custom to your space. When planning, account for the number of storage carts you'll need, typically one cart per row, and designate a secure storage location.



### Why Choose Portable

Portable hardwood courts maximize the use of multi purpose facilities without compromising playability. The design makes it possible to host basketball one night and a concert or graduation the next. For organizations that operate in leased buildings or need to move their courts between multiple venues, portability protects your investment and offers unmatched flexibility.

To learn more about Connor Sports QuickLock portable systems and how they compare with other options, contact your Connor Sports Regional Sales Manager.



# About Connor Sports

## The History of QuickLock

Founded in 1872, Connor Sports has delivered high performance sports flooring for over a century and a half. QuickLock has served as the official court for NCAA® March Madness® and the Final Four® since 2006. Our commitment to excellence has awarded us the opportunity to work with the NBA, the WNBA, the Summer Olympic Games, the FIBA World Cup, over a dozen NCAA Division I Conference Championships, and hundreds of NCAA Division I programs across the country.

- **Where Champions Play:** Our portable and permanent courts are in use from high school gyms to NBA and WNBA arenas. They appear at collegiate facilities across the country and at international events like the FIBA World Cup and the Olympic Games.
- **Unmatched Expertise:** As a founding member of the MFMA and the long time Official Court provider for the Men's and Women's NCAA March Madness and Final Four, we hold ourselves to the highest standards in quality, sustainability and performance.
- **Comprehensive Support:** We provide guidance at every stage, from selecting the right system to overseeing installation and training. Your Regional Sales Manager is your first stop for general inquiries, while technical questions about portable courts are directed to our dedicated portable specialist.

## Portable Court Resource

The Connor Sports team will work with you on all things sports surfaces and subfloor; including permanent and portable sports flooring.

For questions about portable systems, or to discuss an upcoming project, please contact either:

### Mike Turnbow

Portable Sales Manager

[mike.turnbow@connorsports.com](mailto:mike.turnbow@connorsports.com)

630 222 0936

## Regional Sales Managers

We believe in a personal connection, not just a transaction. That's why we've built a dedicated team of Regional Sales Managers, each one a local expert committed to serving you personally, whether you're in the West, Southwest, Midwest, Northeast, or Southeast.



# QuickLock Portable System Options

Connor Sports offers two portable sports flooring systems designed to deliver the look and feel of a permanent gym floor while giving arenas and facilities the flexibility to install, remove and store the court as needed. Here's how QuickLock Classic and QuickLock Fusion compare, based on construction and ease of use.



## QuickLock Classic

- **Engineered for big events:** QuickLock Classic uses a premium northern maple wear layer mounted to a sturdy plywood subfloor. A picture-frame construction with double laminated sleepers helps control vibration and ensures consistent area deflection.
- **Seamless integration:** Continuous steel tongues slide into high-impact polyethylene grooves, creating tight seams between panels. Our original QuickLock design uses Quick pins to lock the panels in place, providing a secure, stable playing surface.
- **Enhanced playability:** This system is known for excellent ball response, shock absorption and player comfort. It's a favorite at NCAA March Madness, the Final Four and many NBA and WNBA arenas.
- **Best suited for:** Venues hosting high-profile tournaments, conferences or professional games that require a robust system capable of handling frequent installations and removals.



## QuickLock Fusion

- **Built for speed:** Fusion offers the same high-quality maple surface with a slightly lighter subfloor. The locking pins are mechanically integrated into the panels, eliminating separate hardware and making assembly faster.
- **Tight, durable seams:** Like Classic, Fusion relies on a steel tongue and polyethylene groove connection to align panels precisely, providing a smooth playing surface with minimal gaps.
- **Comfort and performance:** Fusion delivers comparable ball response and shock absorption with a lighter feel underfoot. The assembly and disassembly can be done faster, with less tools, making it ideal for venues with tight turnaround times.
- **Best suited for:** Facilities that frequently transition between sports and non-sporting events or that need to assemble, disassemble, and store the court quickly.

Both systems can be fitted with optional PowerShok™ resilient pads to enhance shock absorption and athlete comfort.

# QuickLock vs. the Competition

When comparing portable court systems, the details matter. Here's why QuickLock stands out:



## Durable joints and stable frame

The unique "picture frame" design, with double-laminated sleepers, evenly distributes weight and controls vibration. Other systems use lighter materials and loose hardware that can slow down installation or break due to loose parts.



## Simple, reliable locking

Quick pins on the Classic system and integrated pins on Fusion make assembly straightforward. With no exposed bolts or complicated hardware, setup is fast and there are fewer points of failure.



## Trusted at the highest levels

QuickLock sports floors are used at the highest level of competition for the NCAA March Madness and Final Four, the Summer Olympic Games, the FIBA World Cup, NBA, WNBA, and hundreds of major Division I universities across the country.



Focusing on material quality, structural stability and proven usage will help you make a confident choice among portable court systems.

# Requesting Samples

Experiencing a court panel firsthand is the best way to appreciate its quality. We're happy to send you a sample of our QuickLock systems so you can feel the difference.



## See our process

Watch a short video that shows how Connor Sports prepares and ships samples across all product lines, both portable and permanent: [youtu.be/ o6TDS05BS8](https://youtu.be/o6TDS05BS8).

## How to request

Contact your Regional Sales Manager or Portable Sales Manager with your delivery address, contact name and phone number, and we'll arrange to send a sample.

## What to expect

Your sample will demonstrate the thickness of the maple, the precision of the steel and polymer connection and the craftsmanship that goes into every QuickLock panel.

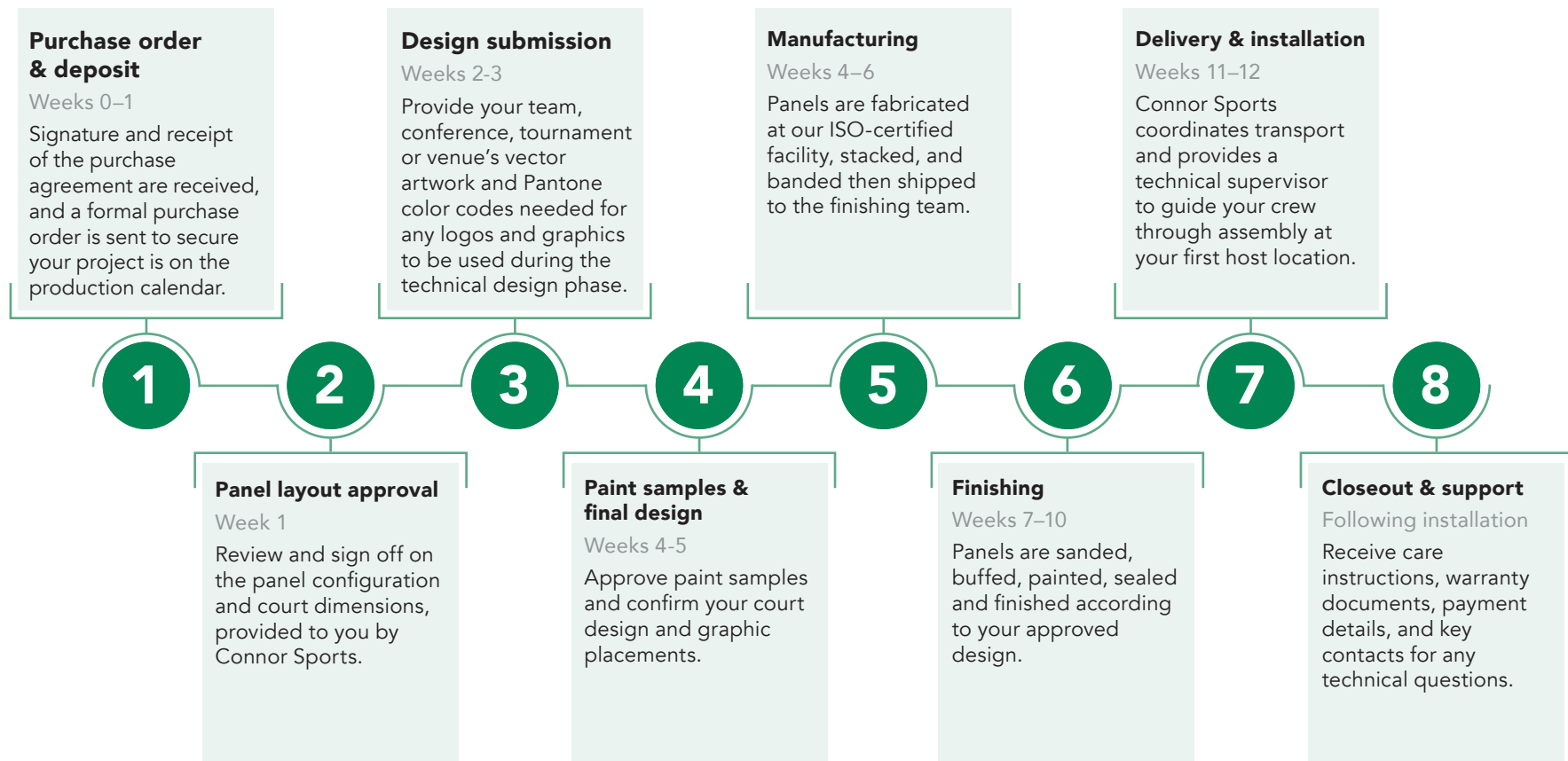


Once you handle a QuickLock sample, we believe you'll see why our components and connections stand out.



# Timeline of Events (At a Glance)

A standard QuickLock project typically progresses over about twelve weeks, though timing can vary. Use the outline below as a general guide:



*Disclaimer: Every project is unique. While this timeline reflects general lead times, actual schedules can vary based on design complexity, availability of materials, customer approvals and shipping logistics. Always consult with your Connor Sports representative for a project plan tailored to your requirements.*

# Court Layouts | Graphics & Color Formats & Approvals

## Your Court, Your Design

Every Connor Sports portable court starts with your vision.

You own the design — we bring it to life with exacting standards, proven processes, and attention to every detail. From the first layout drawing to the final painted finish, you stay in control at every step.

### Step 1

#### Panel Layout → Mill Fabrication

The **panel layout drawing** is the blueprint for your court. It identifies the model, overall size, and how each panel will be arranged and installed.

We don't cut a single board until the signed panel layout is on file. Your approval confirms the layout that will be fabricated at our mill in Amasa, Michigan.



### Step 2

#### Technical Drawing + Paint Samples → Finishing

Once the panel layout is approved, our design team prepares the technical drawing, which combines every element of your final design, including:

- Vector graphics and logos (.AI, .EPS, or .SVG)
- PMS color codes and stain selections
- Chosen game line configurations

Before finishing begins, we ship paint samples of your selected colors and stains for your review and approval.

You'll sign off on both the physical paint/stain samples and the final technical drawing before any sanding, painting, staining, or sealing begins.

These signed approvals give our finishing teams a precise roadmap for your project, ensuring the court is produced exactly as you envisioned and meets the requirements of the NCAA, NBA, FIBA, NFHS, and other governing bodies.

## Why This Process Matters

- You stay in full control of your design.
- Each approval prevents surprises later in fabrication or finishing.
- The process ensures accuracy, brand consistency, and compliance with competition standards.

Once both approvals are complete, your design is locked in and production moves forward with confidence — from vision to finished floor.

## Why Vector Graphics and PMS Colors Matter

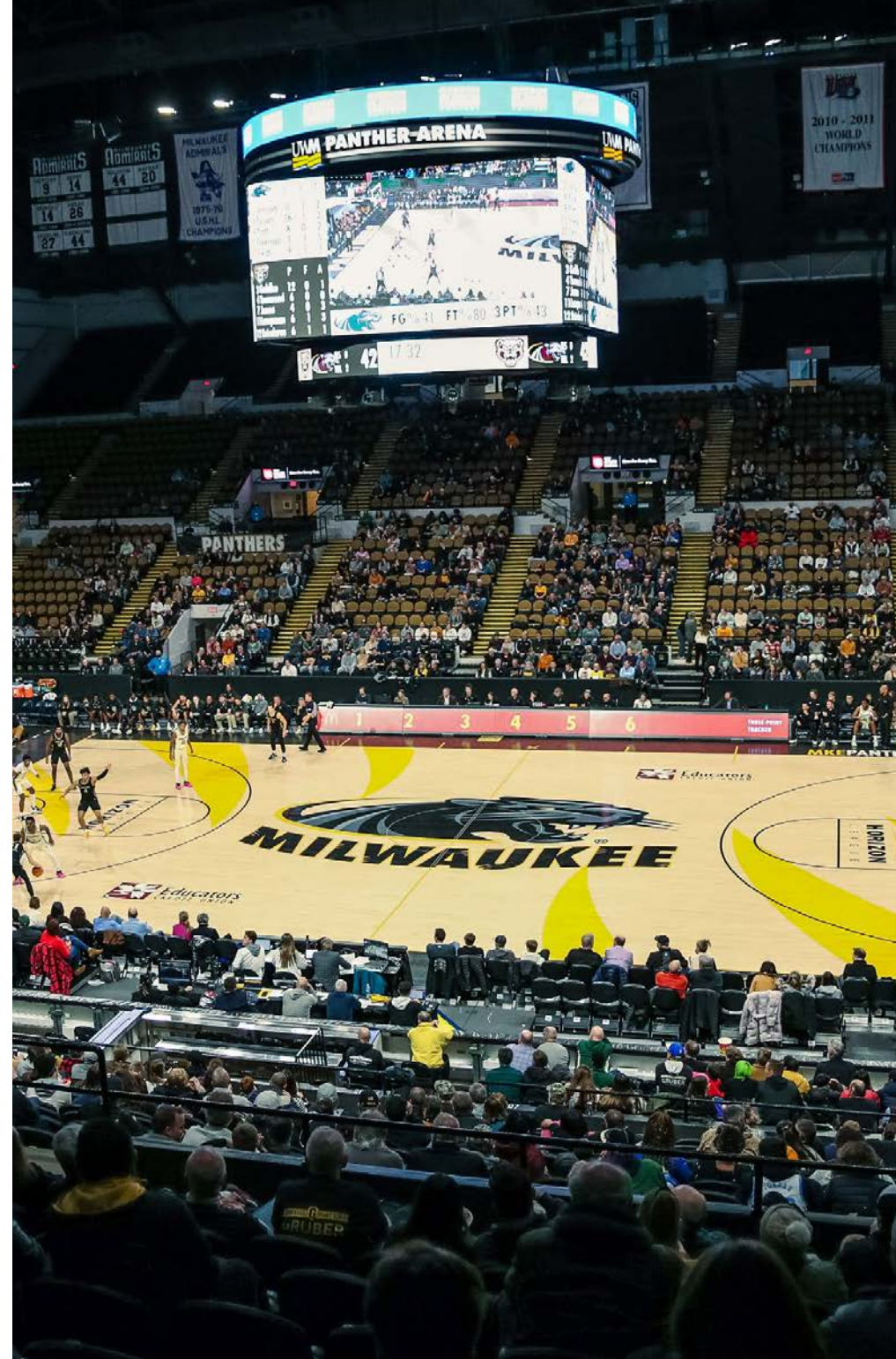
Accurate design starts with accurate files. We require **vector graphics** — typically saved as AI, EPS, or SVG files — for all logos, lettering, and design elements. Unlike image files such as JPEG or PNG, vectors can be scaled to any size without losing clarity or resolution. This ensures your center-court logo, lettering, and graphics look crisp and professional at full scale.

We also rely on the **Pantone Matching System (PMS)** to ensure color consistency. PMS color codes are an international standard used across printing, paint, and manufacturing industries. They allow our finishing team to mix paints to exact color formulas, so your school or organization's colors appear precisely as intended — consistent under bright arena lighting, on camera, and across every panel of your court.

Together, vector graphics and PMS color codes guarantee that what you approve during the design phase is exactly what appears on your finished court.



**Next Steps:** Once these approvals are signed and returned, your court moves into full production — engineered, fabricated, and finished to championship standards.



# Customer Deliverables

To keep your portable court project on track, we'll ask you to confirm a few important details early in the process. This information helps our team to design and plan the project timeline according to your needs.


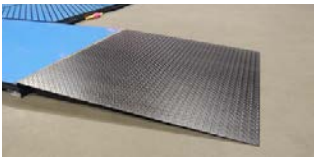



- ✓ **Requested delivery date:** When do you need the completed court ready for play delivered by?
- ✓ **Venue basics:** Name and location of the venue, the dimensions of the playing area, along with any unique site conditions (also used for other sports, concrete slab substrate, HVAC, storage etc.).
- ✓ **Event mix and installation duration:** What types of events will the portable floor support (basketball only or other sporting events)? How often will it be installed and removed? What's the longest stretch of days your team plans to leave it assembled and ready for play?
- ✓ **Environmental controls:** Is your facility able to maintain recommended indoor site conditions of a temperatures ranging from 55° F – 80° F with relative humidity between 35–50% in both the playing area, and equally as important, the storage area?
- ✓ **Storage space:** A standard 60 ft x 120 ft QuickLock court requires about 500 sq ft of secure, climate-controlled storage. Storage carts hold up to 17 panels but cannot be stacked. Pallets can be double-stacked if needed.
- ✓ **Accessories and ramp requirements:** Will you need ADA-compliant access ramps or transition ramps where the court meets the current substrate or venue flooring?
- ✓ **Experience with portable floors:** Has your venue used a portable hardwood sports floor before? If so, what worked well and what challenges do you want to avoid?



Once we have these details, we can recommend the right system and finalize your project plan. For the full list of questions, see the ["Portable Floor Checklist" handout located in the Appendix.](#)

# Accessories & Add-Ons

Connor QuickLock portable courts can be customized with accessories that improve safety, handling, and multi-event flexibility.

ACCESSORY	KEY DETAILS	
	<b>Storage Carts</b>	<ul style="list-style-type: none"> <li>• Hold up to 17 panels per cart</li> <li>• 96" L x 48" W x 46–50" H (loaded)</li> <li>• Weight capacity: 3,000 lbs</li> <li>• Carts are not stackable</li> </ul>
	<b>Heavy Duty ADA Ramps</b>	<ul style="list-style-type: none"> <li>• Wheelchair-accessible entry/exit</li> <li>• Also used for loading and unloading portable basketball goals</li> <li>• ADA-compliant slope and clearance</li> <li>• Integrates seamlessly with court perimeter</li> </ul>
	<b>PowerShok™ Resilient Pads</b>	<ul style="list-style-type: none"> <li>• Optional under-panel pad system</li> <li>• Adds shock absorption and comfort</li> <li>• Compression-resistant cap for durability</li> </ul>
	<b>Transition Ramps</b>	<ul style="list-style-type: none"> <li>• Smooth edge connection to adjacent flooring</li> <li>• Durable steel frame with diamond plate steel surface providing transition from floor to substrate</li> </ul>
	<b>CourtCover™ Protective Covering</b>	<ul style="list-style-type: none"> <li>• Lightweight protective tile system</li> <li>• Protects the court during non-sport events</li> <li>• Stores compactly on rolling carts</li> </ul>

Accessories can be ordered with your new system or added later. Your Connor Sports representative will help identify the right mix for your venue.

# Maintenance & Longevity

A Connor QuickLock portable court is built to perform for years when maintained correctly. Protecting your investment starts with consistent care and proper environmental controls.

FOCUS AREA	KEY DETAILS
Daily Care	<ul style="list-style-type: none"><li>• Dry mop the surface before and after each use</li><li>• Remove spills immediately with a damp cloth (not standing water)</li><li>• Avoid harsh household cleaners, waxes, or abrasive pads</li></ul>
Weekly / Event Care	<ul style="list-style-type: none"><li>• Inspect the floor regularly for scuffs, marks, or loose parts or pieces</li><li>• Use an approved wood floor cleaner with a microfiber towel to remove any areas of discoloration marks or scuffs found</li><li>• Place heavy-duty mats at entry points to catch any loose dirt and grit</li></ul>
Environmental Controls	<ul style="list-style-type: none"><li>• Maintain indoor temperature between 55–80°F (13–27°C) year-round</li><li>• Maintain relative humidity between 35–50% at all times</li><li>• Keep storage and installation areas climate-controlled within the same range, before, during, and after installation</li></ul>
Storage Guidelines	<ul style="list-style-type: none"><li>• Store panels on carts or pallets indoors, never outdoors</li><li>• Never stack carts, pallets may be stacked where needed</li><li>• Allow at least 500 sq ft of secure space for a 60 ft x 120 ft court</li></ul>
Longevity Tips	<ul style="list-style-type: none"><li>• Schedule periodic inspections for wear and finish</li><li>• Screen and Recoat or fully Sand and Refinish as needed (guidance provided if requested)</li><li>• Consult your Connor Sports representative before working with new finishing partners or changing the finish/design of your court</li></ul>

**Important:** Never shut down HVAC systems for extended periods. Fluctuations outside the recommended humidity range can cause wood shrinkage or expansion that damages the floor. For full care instructions, refer to the [official Connor Sports Wood Care & Maintenance Card](#).



# Case Studies & References

Connor QuickLock portable courts are trusted at the highest levels of competition. From NCAA® March Madness® to NBA and WNBA arenas, our systems deliver proven performance where it matters most.

## Where QuickLock is in play

- NCAA Men's and Women's March Madness tournaments and Final Four® — Official court provider since 2006
- NCAA Division I programs nationwide
- NBA arenas including Boston Celtics, Golden State Warriors, Milwaukee Bucks, Brooklyn Nets, Los Angeles Clippers, and Oklahoma City Thunder
- WNBA arenas including Golden State Valkyries, Las Vegas Aces, Atlanta Dream, and future expansion teams
- International stages including the Summer Olympic Games and FIBA World Cup

## Full Installation & Reference List

For a comprehensive list of NBA, WNBA, NCAA, and international installations, please see the "[Installations & References](#)" document in the Appendix.



## What our partners say

"Our Connor Court still carries the unmistakable look of the original that is instantly recognizable worldwide but, as important, the consistent play and bounce have been second to none."

– Jay Wessland, VP of Operations, Boston Celtics

"Connor Sports provided us with a portable court that has met every expectation — from player safety and performance to ease of handling and reliability for our operations team."

– Milwaukee Bucks, NBA Reference Letter



# NCAA Tournament Courts

A Unique Opportunity Available Only Through Connor Sports

Each March, the road to the championship runs across Connor Sports hardwood.

As the **Official Court of the NCAA Men's and Women's Basketball Championships**, every game—from the First Four to the Final Four—is played on a Connor QuickLock portable court built in our Amasa, Michigan facility.

## NCAA Tournament Court Availability & Purchase Options

Each year, the NCAA Men's and Women's National Champions receive the first option to purchase the very court used for the Final Four and National Championship games—the same floor on which they captured their title.

A limited number of NCAA Men's and Women's Regional courts, used during the Sweet 16 and Elite Eight rounds, are also made available for purchase after each tournament.

These once-used courts are offered on a first-come, first-served basis and require a non-refundable \$10,000 deposit to reserve.

Owning one of these tournament floors allows schools, arenas, and facilities to bring a genuine piece of college basketball's most celebrated tradition to their venue—typically at a discount of \$15,000–\$20,000 compared to a newly built court of the same model and specification.

## Typical NCAA Tournament Court Specifications

- **Model:** Connor QuickLock Fusion portable court
- **Panel size:** 7 ft × 4 ft (lighter-weight panel design)
- **Court size:** Typically 60 ft × 112 ft or 60 ft × 120 ft
- **Maple:** MFMA-certified Northern Hard Maple, 2nd & Better grade
- **Installation:** Corner-to-corner (straight-lay) configuration

## Branding & Graphics Requirements

All NCAA Tournament graphics, wordmarks, and identifying marks must be sanded off prior to resale or reuse.

Customers not using Connor Sports' finishing services are responsible for removing these trademarked graphics before installation.

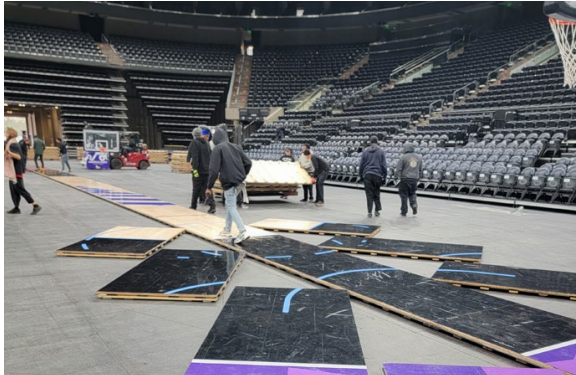
## Bring the Legacy Home

Bring the spirit of March Madness to your arena with a once-used NCAA Tournament court from Connor Sports—the **Official Court of the NCAA Men's and Women's Basketball Championships**.



Contact your Connor Sports representative for current availability and purchase details.

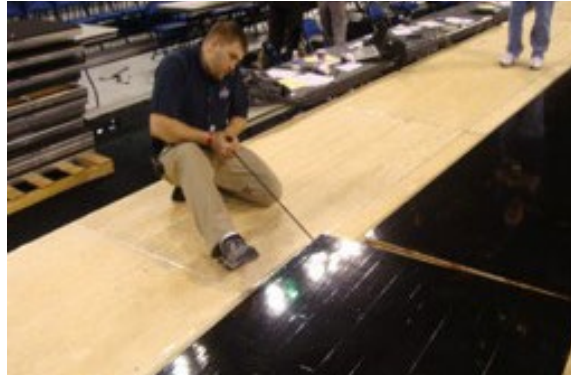
# Installation, Removal & Storage



## Installation

Tools provided include alignment block, tearout tool, and drift pins (if needed).

- Panels are numbered for proper sequence and alignment.
- A Connor Sports technical supervisor can provide onsite guidance.
- Recommended crew size: 8-12 able bodied men and women.
- Typical installation time: under 2-3 hours depending on crew experience and court size.



## Removal

Recommended crew size: 8-12 able bodied men and women.

- Typical removal time: under 2-3 hours depending on crew experience and court size.
- Disassemble in reverse of the installation sequence using the provided tools.
- Separate panels while stacking with the Millinex protective sheets that are provided with the system when shipped on-site to the arena.



## Storage

Store panels in a climate-controlled environment (55-80°F, 35-50% RH).

- Use storage carts to protect panels and assist with transport (typically 15 carts for a 60 ft x 120 ft court).
- Stack panels face-to-face, separated by Millinex, whenever possible to protect the finish.



For complete details, please refer to the official [Connor Sports installation instructions](#) in the Appendix.

*Note: Millinex protective sheets are provided with the court system for use between panels during storage.*

# Technical Specifications & Safety

## System Specifications (Typical)

- **Panel size:** 8 ft × 4 ft (nominal), 2½ in profile height
- **Maple:** 25/32 in × 2¼ in MFMA-certified Northern Hard Maple
- **Subfloor:** Laminated sleeper, picture-frame design for stability
- **Panel weight:** Approximately 160 lbs. each
- **Court size:** Standard 60 ft × 120 ft court requires approximately 230 full panels plus half-panels

## Transport

- 16 pallets (double-stacked) required for one 60 ft × 120 ft court and accessories
- Approximate truckload weight: 37,000 lbs.
- Courts typically ship on a standard 48'–53' flatbed truck for easy loading and unloading

## Delivery & Unloading

- **Forklift:** Minimum 5,000 lb. capacity required for unloading
- **Access:** Standard 48'–53' flatbed trailer delivery; loading dock or forklift access required
- **Truckload weight:** Approximately 37,000 lbs. for one 60' × 120' court
- **Pallets:** Approximately 16 pallets, double-stacked for transport

## Storage

- Storage area required: 500 sq. ft. for one 60 ft × 120 ft court
- Panels stored on pallets can be double-stacked (up to 17 panels per pallet), typically one 4 ft row per pallet
- Panels stored on optional storage carts cannot be double-stacked (17 panels per cart)
- Panels should be stored in a climate-controlled environment maintained between 55–80°F (13–27°C) and 35–50% relative humidity

## Safety & Environmental Requirements

- Maintain indoor temperature between 55–80°F (13–27°C) year-round
- Maintain relative humidity between 35–50% at all times
- Substrate must be broom-cleaned and flat within 1/8 inch in 10 ft (straightedge)
- Protective Millinex sheets used between panels during storage and transport to prevent finish damage




For complete engineering specifications, technical drawings, and compliance details, [see the Appendix](#).

# Appendix

QuickLock Classic	23
QuickLock Fusion	25
Ramp Options	27
Maple Grades	28
Accessories Specifications	29
QuickLock Vs. The Competition	31
FIBA Certificate of Approval	32
Installations and References	33
Panel Layout	35
Technical Drawing	36
Color Layout/Court Mockup	37
Installation Instructions	38
Caring for your Hardwood System	39
Warranty Example	40

# QuickLock Classic







**CONNOR SPORTS**  
Where Champions Play™

**QUICKLOCK™ CLASSIC**  
**PERFORMANCE PORTABLE SYSTEM**

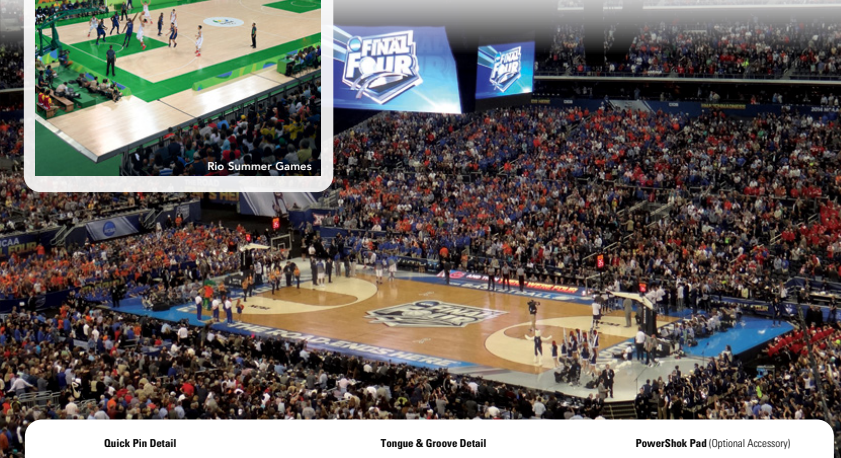
The world's most trusted hardwood flooring system has established a legacy as the official court of the NCAA March Madness® and Final Four®, the Summer Olympic Games, the FIBA World Cup, 14 NCAA Conference Championships, plus dozens of NBA, and NCAA D1 teams nationwide.



Rio Summer Games



FINAL FOUR



**Quick Pin Detail**

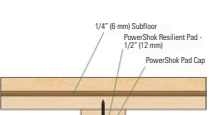


**Tongue & Groove Detail**




Slab Depression: Standard Profile Height 2-1/2" (64 mm)

**PowerShok Pad (Optional Accessory)**






**Manufacturing:**  
ISO 14001:2015



**Recycled Contribution:**  
Includes components with recycled content



**Testing Laboratory:**  
United States Sports Surfacing Laboratory





**Certified Testing:**  
ISS Scientific Body Membership



**Green Status:**  
Managed Forests, Certification Available

Customer Service: 800.283.9522 | [info@connorsports.com](mailto:info@connorsports.com) | [connorsports.com/products](http://connorsports.com/products)

**Where Champions Play™**


a company of **Gerflor**

©2024 Connor® is a registered trademark of Connor Sports. TLT001

# QuickLock Classic

## QuickLock™ Classic Portable System Overview

Classic 8 Foot Panels

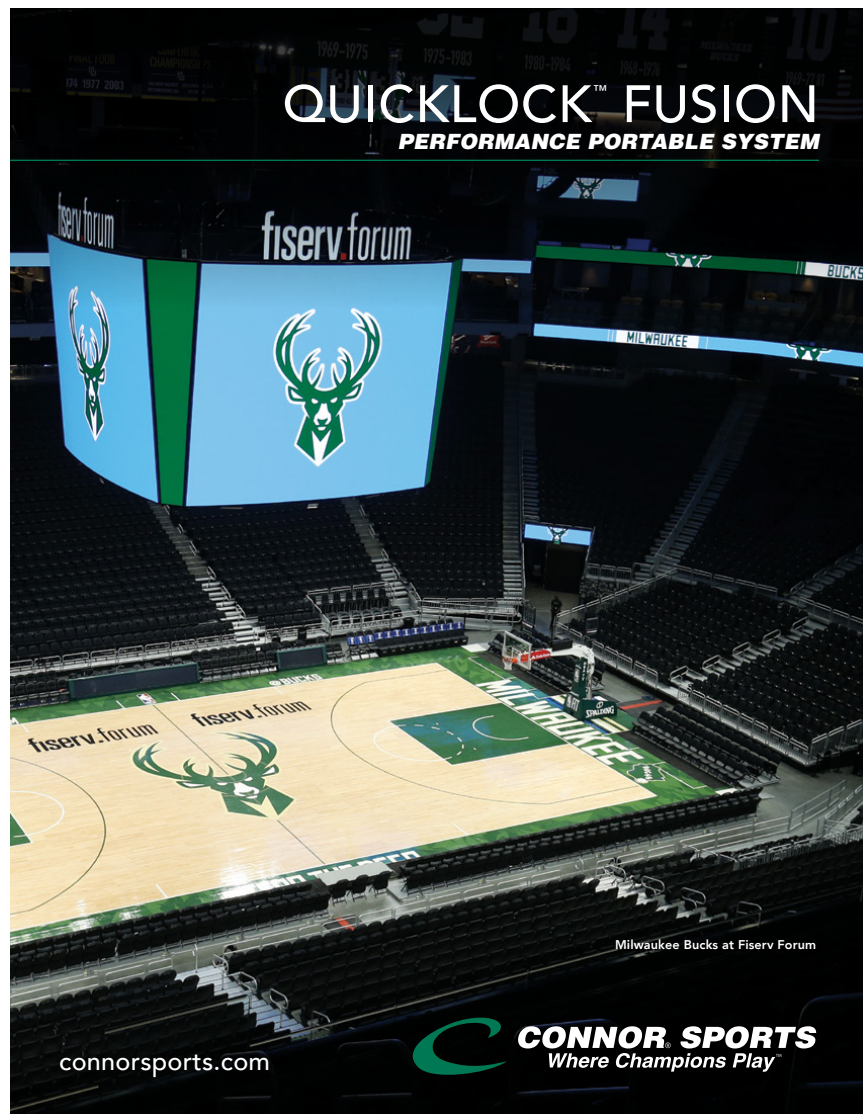
<b>SYSTEM OVERVIEW</b>	Standard Panel Dimensions	96.25L" x 48.375W" x 2.5H"
	Standard Panel Weight	160 lbs
	Optional Accessories	Resilient Pads, Hoop Ramps, Perimeter Transitions, Storage Carts
<b>SHIPPING GUIDELINES</b>	Shipping Pallet Dimensions	97L" x 49.5W" x 41.5H" (15 panels = complete 120' row)
	Shipping Pallet Weight	2,465 lbs (120' row including pallet)
	Shipping Truck Type	Tarped Flatbed Trailer
	Shipping Truck Orientation	15 Pallets, Double Stacked (60' x 120' court)
	Shipping Truckload Weight	36,975 lbs (60' x 120' court)
<b>USAGE GUIDELINES</b>	Intended Use	Portable Hardwood Sports Surface
	Minimum Usage Interval	Single Event
	Maximum Usage Interval	Semi-Permanent with Periodic Inspection
	Misuse & Unintended Use	Outdoor Applications, Automobiles, Forklifts
<b>FINISHING &amp; AESTHETICS</b>	Standard Painted Graphics	Basic Borders, Basic Keys, Basic Baseline Lettering & Center Logo
	Premium Graphics	Tinting, Staining, Complex Painting & Lettering, Oversize Logos
	Maple Expansion Rows	Customized Per Court Based on Seasonal Humidity Changes
	Repainting & Refinishing	Consult Your Connor Sports Sales Representative
<b>WARRANTY &amp; CARE</b>	Connor Sports Warranty	1 Year
	Cleaning Frequency	After Each Use
	Cleaning Protocol	Dust Mop, Damp Mop (ring dry to avoid excess/standing water)
	Annual Service & Storage	Consult Your Connor Sports Sales Representative
<b>STORAGE GUIDELINES</b>	Storage Facility	Climate Controlled, Humidity Controlled
	Empty Storage Cart Dimensions	96" L x 48"W x 9"H
	Loaded Storage Cart Dimensions	96" L x 48"W x 50"H (15 panels = complete 120' row)
	Storage Cart Panel Capacity	17 Panels
	Storage Cart Weight Capacity	3,000 lbs
	Storage Cart Stacking	Not Possible
	Storage Pallet Dimensions	97L" x 49.5W" x 41.5H" (15 panels = complete 120' row)
	Storage Pallet Stacking	Double Stack OK
	Area Required for Storage	500 FT <sup>2</sup> (60' x 120' court)

<b>ASSEMBLY PROCESS</b>	Installation Crew	8 People Recommended
	Installation Time	Under 3 Hours (can vary with crew size & experience)
	Required Installation Tools	Drift & Clevis Pins, Alignment Block, Sledge Hammer (provided)
	Hoop Installation & Alignment	Contact Your Hoop Representative for Help
<b>DISASSEMBLY PROCESS</b>	Disassembly Crew	8 People Recommended
	Disassembly Time	Under 3 Hours (can vary with crew size & experience)
	Required Disassembly Tools	Breakdown Tool (provided), Straight Claw Hammer
	Protective Panel Sheets	Insert Plastic Sheets Between Panels to Protect Finish
	Panel Stacking	Stack Panels Face To Face To Protect Finish

For additional information, official installation instructions, technical specifications or technical drawings, please visit [connorsports.com](http://connorsports.com) or contact your Local Connor Sports Sales Representative

A company of  Gerflor

# QuickLock Fusion





**CONNOR SPORTS**  
Where Champions Play™

**QUICKLOCK™ FUSION**  
**PERFORMANCE PORTABLE SYSTEM**



Golden State Warriors at the Chase Center

QuickLock Fusion is the newest innovation from Connor Sports making facility change over more simple and faster than ever before. This impressive new system is already making a big impact at the NCAA Final Four®, the Summer Olympic Games, the FIBA World Cup, and with NBA teams the Milwaukee Bucks, Golden State Warriors and the Brooklyn Nets.

**Fusion Panel Connection**



1/4" (6 mm) Subfloor  
Full Subfloor Frame  
Laminated Slipper  
Fixed Fusion Pin  
Continuous Steel Tongue

**Tongue & Groove Detail**



25/32" x 2-1/4" (20 mm x 57 mm) Maple  
1/4" (6 mm) Subfloor  
High Impact Polyethylene Groove  
1/4" x 1-3/4" (6 mm x 44 mm) Steel Tongue

**PowerShok Pad (Optional Accessory)**



1/4" (6 mm) Subfloor  
PowerShok Resilient Pad - 1/2" (12 mm)  
PowerShok Pad Cap

**Slab Depression: Standard Profile Height 2-1/2" (64 mm)**



**Manufacturing:**  
ISO 14001:2015



**Recycled Contribution:**  
Includes components with recycled content



**Testing Laboratory:**  
United States Sports Surfacing Laboratory



**Certified Testing:**  
ISS Scientific Body Membership



**Green Status:**  
Managed Forests, Certification Available

Customer Service: 800.283.9522 | [info@connorsports.com](mailto:info@connorsports.com) | [connorsports.com/products](http://connorsports.com/products)

**Where Champions Play™**





a company of **Gerflor**

©2024 Connor® is a registered trademark of Connor Sports. TLT012

# QuickLock Fusion

## QuickLock™ Fusion Portable System Overview

Fusion 8 Foot Panels

<b>SYSTEM OVERVIEW</b>	Standard Panel Dimensions	96.25L" x 48.375W" x 2.5H"
	Standard Panel Weight	160 lbs
	Optional Accessories	Resilient Pads, Hoop Ramps, Perimeter Transitions, Storage Carts
<b>SHIPPING GUIDELINES</b>	Shipping Pallet Dimensions	Unpadded: 97"L x 49.5"W x 41.5"H (15 panels = complete 120' row) Padded: 102"L x 49.5"W x 42.5"H (15 panels = complete 120' row)
	Shipping Pallet Weight	2,465 lbs (120' row including pallet)
	Shipping Truck Type	Tarped Flatbed Trailer
	Shipping Truck Orientation	15 Pallets, Double Stacked (60' x 120' court)
	Shipping Truckload Weight	36,975 lbs (60' x 120' court)
<b>USAGE GUIDELINES</b>	Intended Use	Portable Hardwood Sports Surface
	Minimum Usage Interval	Single Event
	Maximum Usage Interval	Semi-Permanent with Periodic Inspection
	Misuse & Unintended Use	Outdoor Applications, Automobiles, Forklifts
<b>FINISHING &amp; AESTHETICS</b>	Standard Painted Graphics	Basic Borders, Basic Keys, Basic Baseline Lettering & Center Logo
	Premium Graphics	Tinting, Staining, Complex Painting & Lettering, Oversize Logos
	Maple Expansion Rows	Customized Per Court Based on Seasonal Humidity Changes
	Repainting & Refinishing	Consult Your Connor Sports Sales Representative
<b>WARRANTY &amp; CARE</b>	Connor Sports Warranty	1 Year
	Cleaning Frequency	After Each Use
	Cleaning Protocol	Dust Mop, Damp Mop (ring dry to avoid excess/standing water)
	Annual Service & Storage	Consult Your Connor Sports Sales Representative
<b>STORAGE GUIDELINES</b>	Storage Facility	Climate Controlled, Humidity Controlled
	Empty Storage Cart Dimensions	96"L x 48"W x 9"H
	Loaded Storage Cart Dimensions	Unpadded: 96"L x 48"W x 46.5"H (15 panels = complete 120' row) Padded: 102"L x 48"W x 47.5"H (15 panels = complete 120' row)
	Storage Cart Panel Capacity	17 Panels
	Storage Cart Weight Capacity	3,000 lbs
	Storage Cart Stacking	Not Possible
	Storage Pallet Dimensions	Unpadded: 97"L x 49.5"W x 41.5"H (15 panels = complete 120' row) Padded: 102"L x 49.5"W x 42.5"H (15 panels = complete 120' row)
	Storage Pallet Stacking	Double Stack OK

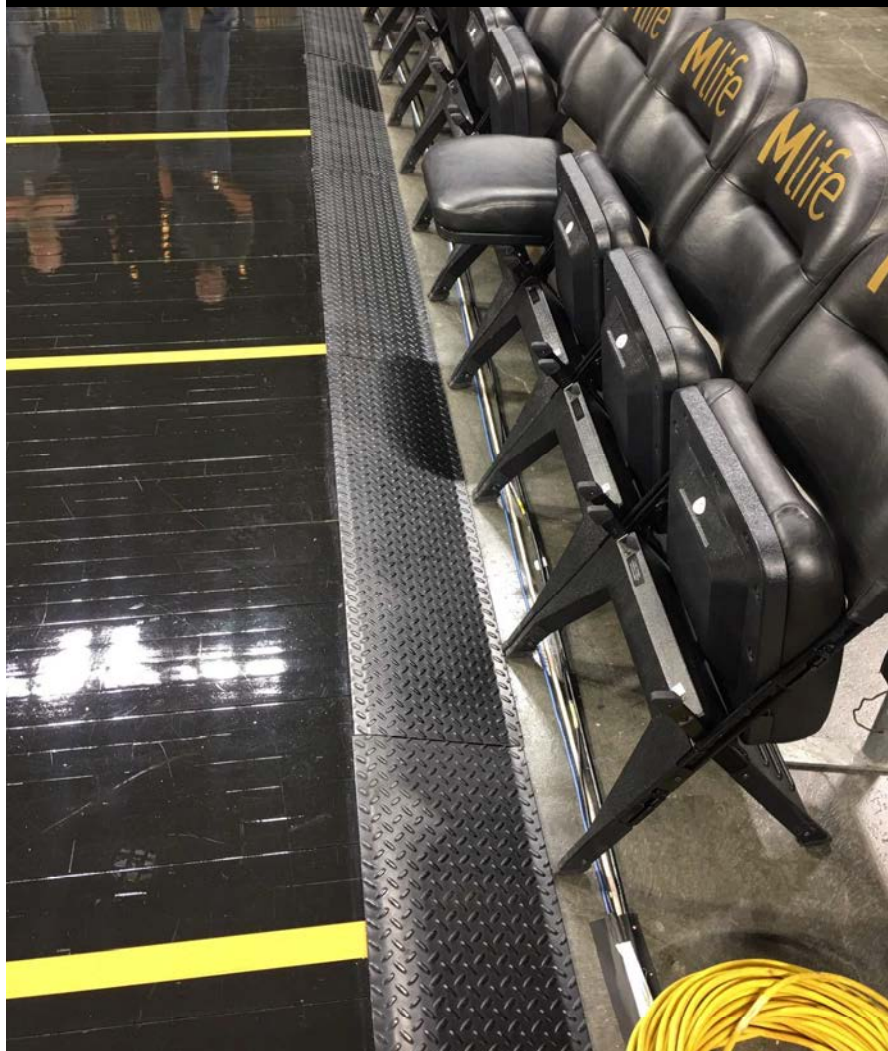
<b>ASSEMBLY PROCESS</b>	Area Required for Storage	500 FT <sup>2</sup> (60' x 120' court)
	Installation Crew	8 People Recommended
	Installation Time	Under 2 Hours (can vary with crew size & experience)
	Required Installation Tools	Alignment Block, Sledge Hammer (provided)
<b>DISASSEMBLY PROCESS</b>	Hoop Installation & Alignment	Contact Your Hoop Representative for Help
	Disassembly Crew	8 People Recommended
	Disassembly Time	Under 2 Hours (can vary with crew size & experience)
	Required Disassembly Tools	Breakdown Tool (provided)
	Protective Panel Sheets	Insert Plastic Sheets Between Panels to Protect Finish
Panel Stacking	Stack Panels Face To Face To Protect Finish	

For additional information, official installation instructions, technical specifications or technical drawings, please visit [connorsports.com](http://connorsports.com) or contact your Local Connor Sports Sales Representative

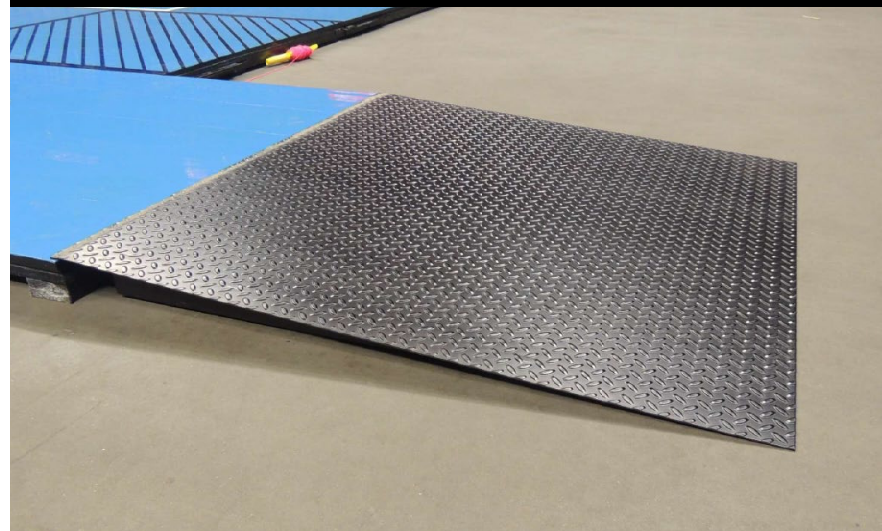
A company of 

# Ramp Options

Perimeter Ramps (Transitions)



Heavy Duty ADA Ramp



# Maple Grades

Milwaukee Bucks  
1st Grade Maple



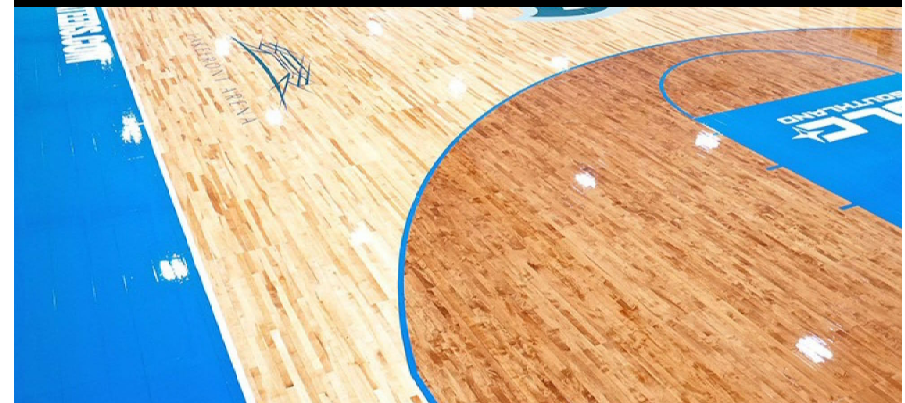
University of Wisconsin Madison  
2nd Grade Maple



Iowa State University  
2nd Grade Maple with Game Lines



University of New Orleans  
2nd Grade Maple with Interior 3 pt Arc Stained



# Accessories Specifications

## Storage Carts

WHEELS WELDED IN PLACE CENTERED ON C-CHANNEL

SECTION A-A

DETAIL C SCALE 1 : 8

REVISIONS			
REV.	DESCRIPTION	DATE	
A	INITIAL RELEASE	2/10/2020	

ITEM NO.	PART NUMBER	DESCRIPTION	QTY.
1	850860-7-01	2 x 2 x 48 ANGLE	2
2	850860-7-02	2 x 2 x 84 ANGLE	2
3	850860-7-03	2 x 6 x 47.5 CHANNEL	2
4	6" SWIVEL CASTER	FASTENAL 570284-131439 [OR EQUIVALENT]	2
5	6" RIGID CASTER	FASTENAL 570285-131439 [OR EQUIVALENT]	2

CONNOR SPORTS  
251 INDUSTRIAL PARK RD.  
AMASA, MI 49903  
630-222-0928

DRAWN: AJJ 2/10/20  
CHECKED: EMD 2/10/20

INTERPRET GEOMETRIC TOLERANCING FEES.

MATERIAL: HRS ANGLE  
FINISH: 2-PRT EPOXY BLK  
DO NOT SCALE DRAWING

UNLESS OTHERWISE SPECIFIED: DIMENSIONS ARE IN INCHES.  
FRACTIONAL ± 1/16  
ANGULAR: MAX ± 10° BEND ± 1°  
ONE PLACE DECIMAL ± .125  
TWO PLACE DECIMAL ± .054  
THREE PLACE DECIMAL ± .03

TITLE: QUICKLOCK CART 7'  
SIZE: A DWG. NO. 850860-7 REV A  
SCALE: 1:24/WEIGHT: SHEET 1 OF 2

WHEELS WELDED IN PLACE CENTERED ON C-CHANNEL

SECTION A-A

DETAIL C SCALE 1 : 8

REVISIONS			
REV.	DESCRIPTION	DATE	
A	INITIAL RELEASE	2/10/2020	

ITEM NO.	PART NUMBER	DESCRIPTION	QTY.
1	850860-8-01	2 x 2 x 48 ANGLE	2
2	850860-8-02	2 x 2 x 96 ANGLE	2
3	850860-8-03	2 x 6 x 47.5 CHANNEL	2
4	6" SWIVEL CASTER	FASTENAL 570284-131439 [OR EQUIVALENT]	2
5	6" RIGID CASTER	FASTENAL 570285-131439 [OR EQUIVALENT]	2

CONNOR SPORTS  
251 INDUSTRIAL PARK RD.  
AMASA, MI 49903  
630-222-0928

DRAWN: AJJ 2/10/20  
CHECKED: EMD 2/10/20

INTERPRET GEOMETRIC TOLERANCING FEES.


MATERIAL: HRS ANGLE  
FINISH: 2-PRT EPOXY BLK  
DO NOT SCALE DRAWING

UNLESS OTHERWISE SPECIFIED: DIMENSIONS ARE IN INCHES.  
FRACTIONAL ± 1/16  
ANGULAR: MAX ± 10° BEND ± 1°  
ONE PLACE DECIMAL ± .125  
TWO PLACE DECIMAL ± .054  
THREE PLACE DECIMAL ± .03

TITLE: QUICKLOCK CART 8'  
SIZE: A DWG. NO. 850860-8 REV A  
SCALE: 1:24/WEIGHT: SHEET 1 OF 2

# Accessories Specifications

## PowerShok Resilient Pads

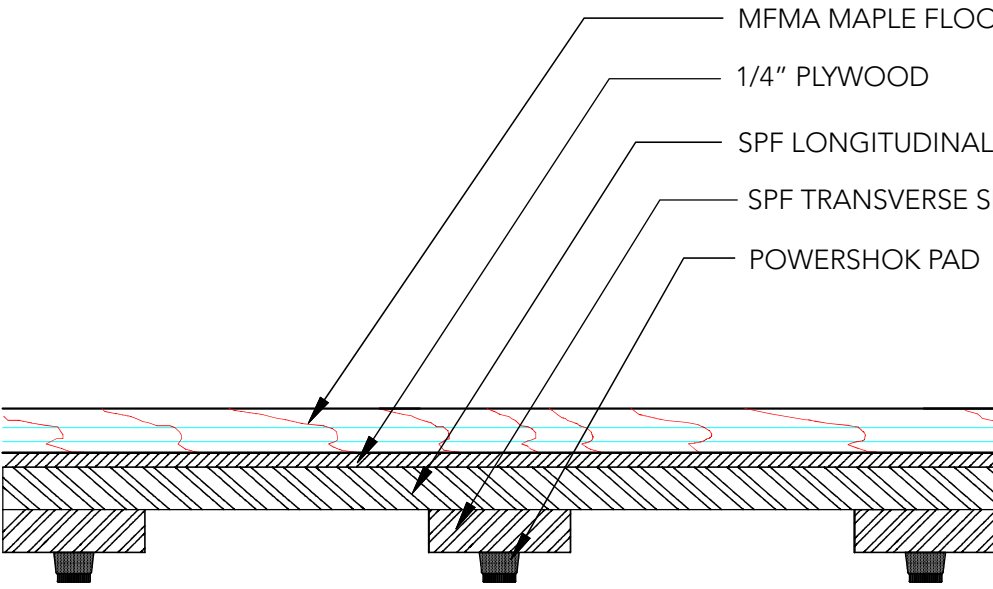


**CONNOR SPORTS**  
Where Champions Play

**MANUFACTURING PLANT AND R+D OFFICE:**  
251 INDUSTRIAL PARK RD  
AMASA, MI 49903  
906-822-7311

REV:	DATE	CHANGE / REVISION	BY	SYSTEM NUM: 503180-RP222
A	Dec 6, 2021	INITIAL RELEASE	JG	SCALE: NO SCALE
				DRAWN BY: J. GASPERICH
				APPROVED BY: C. VERVILLE
				TITLE: QUICKLOCK POWERSHOK PAD



MFMA MAPLE FLOORING

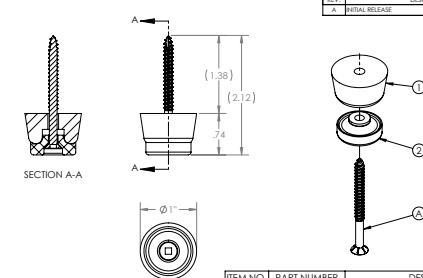
1/4" PLYWOOD

SPF LONGITUDINAL SLEEPER

SPF TRANSVERSE SLEEPER

POWERSHOK PAD

REVISIONS		
REV.	DESCRIPTION	DATE
A	INITIAL RELEASE	9/13/2021



ITEM NO.	PART NUMBER	DESCRIPTION	QTY
1	680875	POWER SHOK PAD - BLACK	1
2	503853-A	POWERSHOK CAP - REV A	1

**INSTALLATION MATERIALS**

CONSOLE PARTS	NAME	DATE	TITLE:
251 INDUSTRIAL PARK RD, AMASA, MI 49903 635-222-0928	DAWN	6/17/2021	POWERSHOK PAD AND CAP A
DESIGNED BY:	ALJ	9/14/21	REV
CHECKED BY:	ED	9/15/21	A
DATE:			SCALE: 1:1
			WEIGHT:
			SHEET 1 OF 2

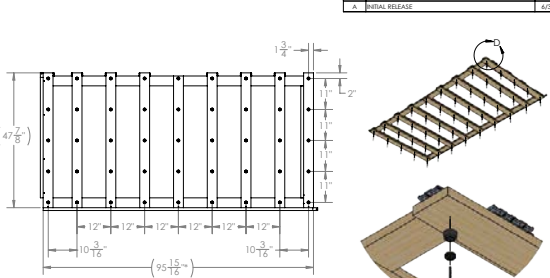
**NOTES:**

- SCREWS DRIVEN TO GENTLE CONTACT WITH POWERSHOK PAD (DO NOT TIGHT WILL PRECOMPRESS THE PAD AND TOO LOOSE WILL STRIKE THE SCREWHEAD AGAINST THE CONCRETE IN USE)
- \*SCREW SELECTION AS NECESSARY

**PROPERTY AND CONFIDENTIALITY:**  
THIS DRAWING IS THE PROPERTY OF CONNOR SPORTS. ANY REPRODUCTION OR DISSEMINATION OF THIS DRAWING WITHOUT THE WRITTEN PERMISSION OF CONNOR SPORTS IS PROHIBITED.  
DO NOT SCALE DRAWING

**VALUES OTHERWISE SPECIFIED:**  
DIMENSIONS ARE IN INCHES  
ANGLES ARE IN DEGREES  
FINISHES ARE AS SHOWN  
TWO PLACE DECIMALS  
DIMENSIONS IN PARENTHESIS ARE IN MILLIMETERS

REVISIONS		
REV.	DESCRIPTION	DATE
A	INITIAL RELEASE	6/9/2020



\*SHORTER PANELS WILL HAVE FEWER SLEEPERS, BUT THE NUMBER OF PADS PER SLEEPER AND THEIR SPACING REMAINS AS PICTURED IN THIS DRAWING

CONSOLE SPORTS	NAME	DATE	TITLE:
251 INDUSTRIAL PARK RD, AMASA, MI 49903 635-222-0928	DAWN	6/17/2020	PORTABLE PANEL POWERSHOK PAD PLACEMENT DIAGRAM
DESIGNED BY:	N/A		REV
CHECKED BY:	N/A		A
DATE:			SCALE: 1:20
			WEIGHT:
			SHEET 1 OF 1

**PROPERTY AND CONFIDENTIALITY:**  
THIS DRAWING IS THE PROPERTY OF CONNOR SPORTS. ANY REPRODUCTION OR DISSEMINATION OF THIS DRAWING WITHOUT THE WRITTEN PERMISSION OF CONNOR SPORTS IS PROHIBITED.  
DO NOT SCALE DRAWING

**VALUES OTHERWISE SPECIFIED:**  
DIMENSIONS ARE IN INCHES  
ANGLES ARE IN DEGREES  
FINISHES ARE AS SHOWN  
TWO PLACE DECIMALS  
DIMENSIONS IN PARENTHESIS ARE IN MILLIMETERS

# QuickLock Vs. The Competition



## Connor QuickLock™ vs. The Competition

A Side-by-Side Comparison of Portable Basketball Court Systems

### Why Connor QuickLock™ is the Portable Surface of Champions

- **Superior Subfloor:** Full picture-frame sleeper design for structural support on all four edges.
- **Stronger Panel Connection:** 1/4" steel tongue + molded polyethylene groove = the tightest alignment.
- **No Loose Hardware:** Our Fusion model features a fixed-pin connection, no need for added bolts or latches.
- **PowerShok™:** EPDM resilient pads with compression-resistant caps for enhanced shock absorption.
- **Proven Performance:** Trusted by top NCAA, NBA, and FIBA programs across the U.S. and around the world.
- **American-Made:** Featuring MFMA Northern Maple at our ISO 14001-certified mill in Northern Michigan.

#### Subfloor Framing & Structural Support

Feature	Connor QuickLock™	The Competition
Sleeper Width	3-1/2" laminated sleepers	2-1/2" common lumber
Framing Style	Picture-frame design supports all sides of every panel	Sleepers run in only one direction
Stability & Uniformity	Cross and perimeter framing for consistent ball response	Limited perimeter support

#### Tongue & Groove Panel Integration

Feature	Connor QuickLock™	The Competition
Material	1/4" steel tongue + molded polyethylene groove	Light-gauge tin wrap on plywood edge
Connection Strength	Deep, tapered grooves for secure engagement	Shallow wrap which can loosen over time
Locking Mechanism	Fusion fixed-pin—no moving parts or tools needed	Latches/bolts may be used to correct gaps

### Certifications & Global Use

- **ISO 14001 Certified:** Environmentally responsible manufacturing.
- **FIBA Level 1 & 2 Certified:** Approved for Olympic qualifiers, World Cup events, and top-tier competitions

### Trusted by the World's Top Basketball Organizations

- **NCAA:** The Official Court of NCAA March Madness for nearly 20 years (and counting)
  - Used at 20+ tournament venues annually for all Men's and Women's Regional Rounds and Final Fours
- **NBA & WNBA:** Used at over a dozen elite arenas across both leagues for competition and practice
  - Teams like the Brooklyn Nets, Boston Celtics, Golden State Warriors, and Golden State Valkyries

1



## Connor QuickLock™ Illustrated Advantages

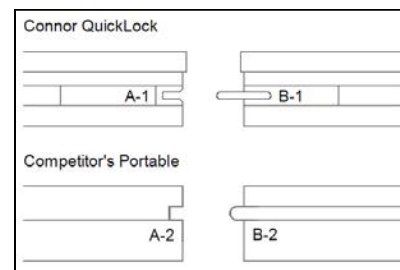
### Steel Tongue & Groove

#### Connor QuickLock™

- A-1: Heavy 1/4" thick steel tongues inserted & anchored into framed sleeper construction.
- B-1: High-impact, wear-resistant polyethylene grooves are custom molded for a tight connection.

#### The Competition

- A-2: Light-gauge tin wrapped around exposed plywood edge.
- B-2: Tin grooves tacked onto side edges — shallower and less secure.



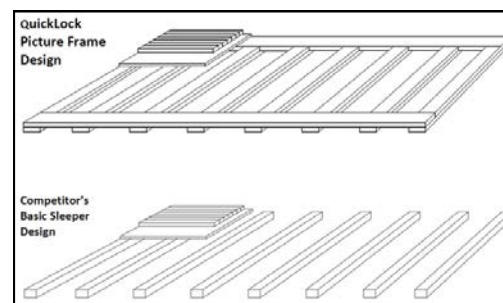
### Picture Frame Construction

#### Connor QuickLock™

- Framed along both 8' and 4' panel edges to reduce panel shifting.
- Eliminates the need for adjustable panel latches by providing greater dimensional stability.

#### The Competition:

- Sleepers run in one direction only, with no support around perimeter edges.
- May require adjustable latches to manage panel shifting or gaps over time.



2

# FIBA Certificate of Approval



APPROVED  
EQUIPMENT



## CERTIFICATE OF APPROVAL

**VALID UNTIL 31 DECEMBER 2025**

FIBA (Fédération Internationale de Basketball) hereby declares, by means of this certificate, that the basketball equipment, indicated below, fulfils the standards specified in the latest edition of the FIBA Approval Programme for Basketball Equipment and therefore qualifies as

### FIBA APPROVED EQUIPMENT

**EQUIPMENT CATEGORY: WOODEN FLOORING**

**CONTRACT NO: M061-2024**

---

**COMPANY: CONNOR SPORT COURT INTERNATIONAL**

Approval Type	Model Name	Wood	FIBA Licence No.	Competition Level
Portable	QuickLock	Maple	WF-061-01	1 & 2
Fixed	Alliance	Maple	WF-061-02	1 & 2
Fixed	Rezill Sleeper	Maple	WF-061-03	1 & 2
Fixed	NeoShok	Maple	WF-061-04	1 & 2
Fixed / Portbale	Connor Modulock	Beech	WF-061-07	1 & 2
Fixed	Rezill Panel	Maple	WF-061-08	1 & 2
Fixed	Connor Sports Aspire I	Oak	WF-061-09	1 & 2

\*A FIBA Approved coating product must be applied to the flooring product in order for the full system to be considered FIBA Approved.

Level 1: FIBA National Team and Club Competitions plus other elite level national and international club and national team competitions. National club competitions may be subject to additional rules issued by national governing bodies. FIBA National Team and Club Competitions' are defined in Book 2 of the FIBA Internal Regulations governing the FIBA Competitions. All equipment at these competitions must be FIBA Approved Level 1 and may display the official FIBA Approved Equipment logo in a FIBA approved layout or make reference to FIBA approval in a FIBA approved form.

Level 2: Any other competition not included in Level 1.  
For Level 2, all technical specifications of basketball equipment must be respected, and FIBA Approved Equipment is strongly recommended.



**Andreas Zagklis**  
FIBA Secretary General



March 2025

FIBA.basketball

# Installations and References



Boston Celtics  
226 Causeway St.  
Boston, MA 02114

January 28, 2018

Gary Gray  
Connor Sports  
180 Howard St. Unit F  
Elk Grove Village, IL 60007

Dear Gary,

While the carpenters that worked on the original (circa 1946) Boston Garden Parquet Court have long been lost in time and history, the legacy of that court lives on in our current, Connor produced portable court. This, second Connor produced replica, is certainly living up to expectations. The original Garden Parquet had a unique look and identity (driven by necessity given the available materials at the time, in the immediate aftermath of World War II). Connor has married that look into a thoroughly modern and safe (for the athletes) basketball court.

Although the first Connor replica (produced in 1999) performed very well and outlived all expectations, when it became apparent that we needed a new court in 2015, we once again turned to Connor Sports. This project was a true collaboration so that we could collectively achieve all the necessary structural, historical, marketing, and delivery goals. The unique challenges of building a modern, NBA approved, court using Oak were met and overcome by Connor once again. I am proud to have been part of the project and am still the day to day champion of keeping the court in the best possible condition (you can often find me discussing cleaning and maintenance with the Garden cleaners and carpenters).

Our Connor Court still carries the unmistakable look of the original that is instantly recognizable world-wide but, as important, the consistent play and bounce have been second to none. We are looking forward to installation of a similar built-in court for our new practice facility to open in June, 2018.

Regards,

Jay Wessland  
CTO and Vice President of Operations  
Boston Celtics



Training Center • 3801 South Lake Drive • Milwaukee, Wisconsin 53207-0812 • (414) 480-2100

September 2, 2005

Connor Sports Flooring  
543 E. Argonne Road  
Suite 1  
Arlington Heights, IL 60005

Dear Connor Sports Flooring,

This is a letter to let you know how much we at the Milwaukee Bucks are enjoying our Connor Basketball Court. We have been using the floor in our facility since 1997, and have enjoyed the overall outstanding performance of this flooring system.

Due to the nature of basketball and all the pounding that our players endure on any given day one of the biggest issues I deal with is "groove wear" (grooves in the wood flooring) because the Connor Basketball Court absorbs 90% of all forces. I believe it has minimized our injuries.

Selecting a basketball court that will perform to the level of the NBA is very important. There are many court options available, and each option comes with its own promise of meeting and exceeding expectations. We are very pleased with the decision to choose a Connor Championship Court for our facility, and would highly recommend this floor to anyone looking for a sports flooring system.

Sincerely,

Tom Wilson  
Strength and Conditioning Coach  
Milwaukee Bucks



To: Mr. John Lewis  
543 East Argonne Rd  
Suite 1  
Arlington Heights, Illinois

Dear Mr. Lewis:

Just a note to say how much we are enjoying our basketball court. We have been using it now for almost five years and our players still comment on what a great feel the floor provides.

As you know at our level of play the players are bigger and stronger, but when a player like Shaquille O'Neal jumps and lands the forces are incredible, but the resilience of our floor is remarkable. All our players compare other floors to ours and all believe ours is superior.

Thanks Again,

Ron Culp

The Miami HEAT  
AmericanAirlines Arena  
601 Biscayne Boulevard  
Miami, Florida 33132  
(305) 777-HEAT



# Installations and References

## NBA:

- Atlanta Hawks – QuickLock (Competition), QuickLock Fusion (Marketing-Auxiliary)
- Boston Celtics – QuickLock (Competition), QuickLock/Combi (Marketing-Auxiliary)
- Brooklyn Nets – QuickLock (Competition), QuickLock Fusion (Marketing-Auxiliary)
- Golden State Warriors – QuickLock (Competition), QuickLock Fusion (Marketing-Auxiliary)
- LA Clippers – QuickLock Fusion (Competition), QuickLock (Marketing-Auxiliary)
- Milwaukee Bucks – QuickLock Fusion (Competition), QuickLock Fusion (Marketing-Auxiliary)
- Oklahoma City Thunder – QuickLock (Competition)
- Philadelphia Sixers – QuickLock Fusion (Marketing-Auxiliary)
- Sacramento Kings – QuickLock (Competition), QuickLock (Marketing-Auxiliary)

- San Antonio Spurs – QuickLock (Competition)
- Utah Jazz – QuickLock (Competition), QuickLock (Marketing-Auxiliary)
- Washington Wizards – QuickLock Fusion (Competition), QuickLock Fusion (Marketing-Auxiliary)

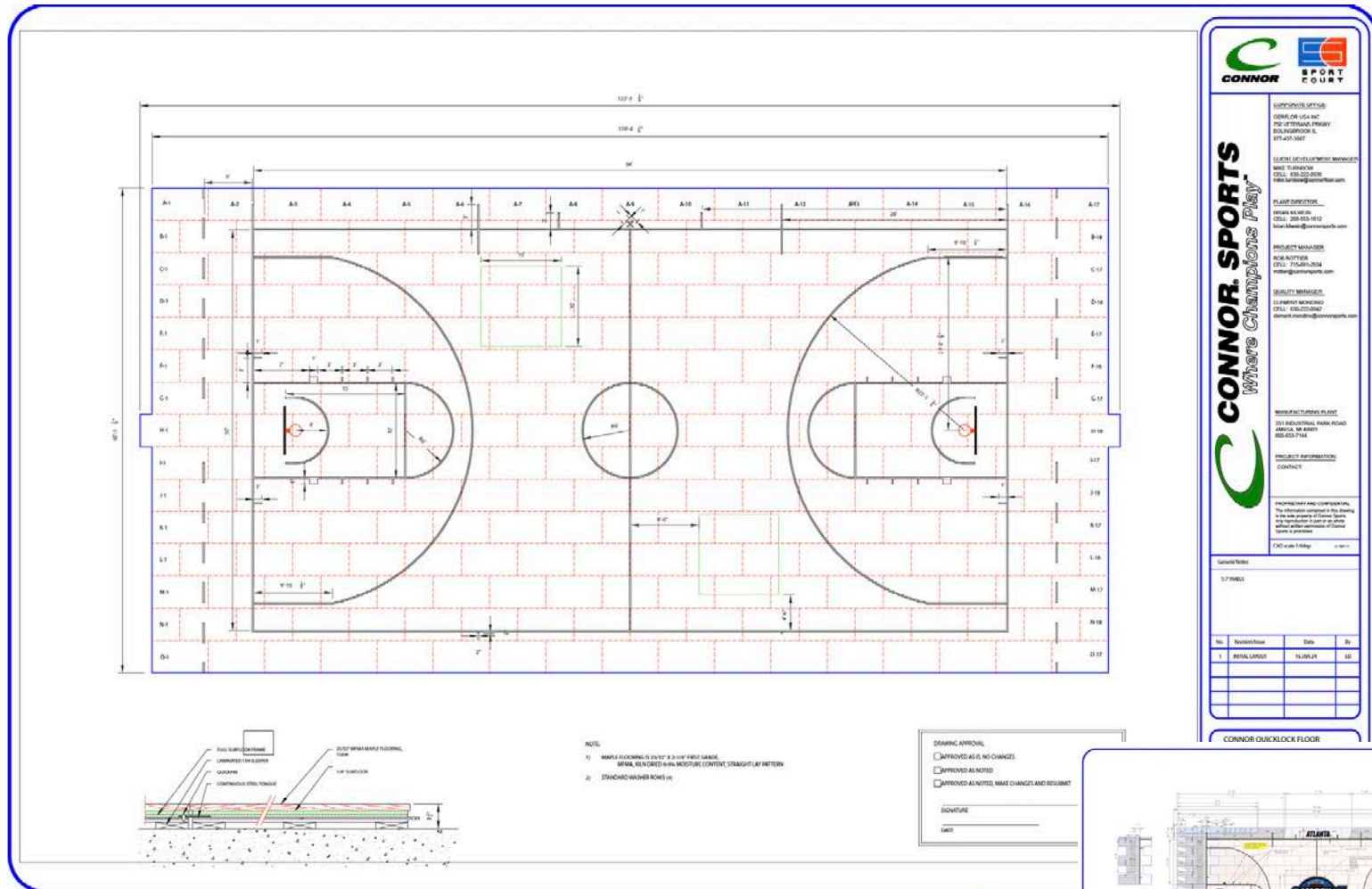
## WNBA:

- Atlanta Dream
- Dallas Wings
- Las Vegas Aces
- Sacramento Monarchs
- Tulsa Shock
- Golden State Valkyries

## NCAA:

- Arkansas State
- Central Florida
- Cincinnati
- DePaul
- Florida
- Florida State
- Furman
- Georgia
- Holy Cross
- Houston
- Illinois State
- Iowa
- Iowa State
- Kennesaw State
- La Salle
- Lamar
- Lehigh
- LSU
- Maine
- Marquette
- Massachusetts Lowell
- Mississippi Valley State
- Missouri State
- Montana State
- Murray State
- Navy
- Nebraska - Omaha
- Nevada
- North Dakota State
- Northern Arizona
- Northern Iowa
- Northern Kentucky
- Notre Dame
- Oklahoma
- Old Dominion
- Oregon
- Rhode Island
- Robert Morris
- Sacred Heart
- San Jose State
- South Carolina
- South Carolina State
- Texas A&M
- Texas - Arlington
- Tulsa
- University of Texas San Antonio
- UNC Charlotte
- USC
- UTEP
- Villanova
- Virginia
- Wake Forest
- Wisconsin
- Wisconsin Milwaukee
- Wright State

# Panel Layout






**CONOR. SPORTS**  
*Where Champions Play*

**CONTRACTOR:**  
CONOR OF USA INC.  
730 W. TRINIDAD STREET  
BIRMINGHAM, AL 35202-3887  
877-433-3887

**CLIENT:** LEVELS OF SPORTS MANAGEMENT  
MARK TUBERLIN  
CELL: 335-222-9828  
MARK.TUBERLIN@CONORSPORTS.COM

**PLANT DIRECTOR:**  
JIMMY KIMBLE  
CELL: 205-355-3112  
JIMMY.KIMBLE@CONORSPORTS.COM

**PROJECT MANAGER:**  
KYLE RUTHERFORD  
CELL: 275-829-2034  
KYLE@CONORSPORTS.COM

**QUALITY MANAGER:**  
CLAYTON BARNWELL  
CELL: 850-273-2942  
CLAYTON.BARNWELL@CONORSPORTS.COM

**MANUFACTURER'S PLANT:**  
231 BARNWELL ROAD  
ATLANTA, GA 30310  
800-833-7144

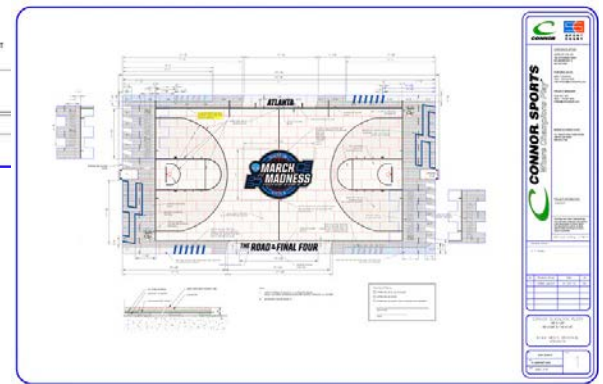
**PROJECT INFORMATION:**  
CONTACT

PROFESSIONAL AND CONFIDENTIAL. The information contained in this drawing is the property of Connor Sports and is not to be used, copied, or otherwise reproduced without the written consent of Connor Sports.

CONOR Sports Logo

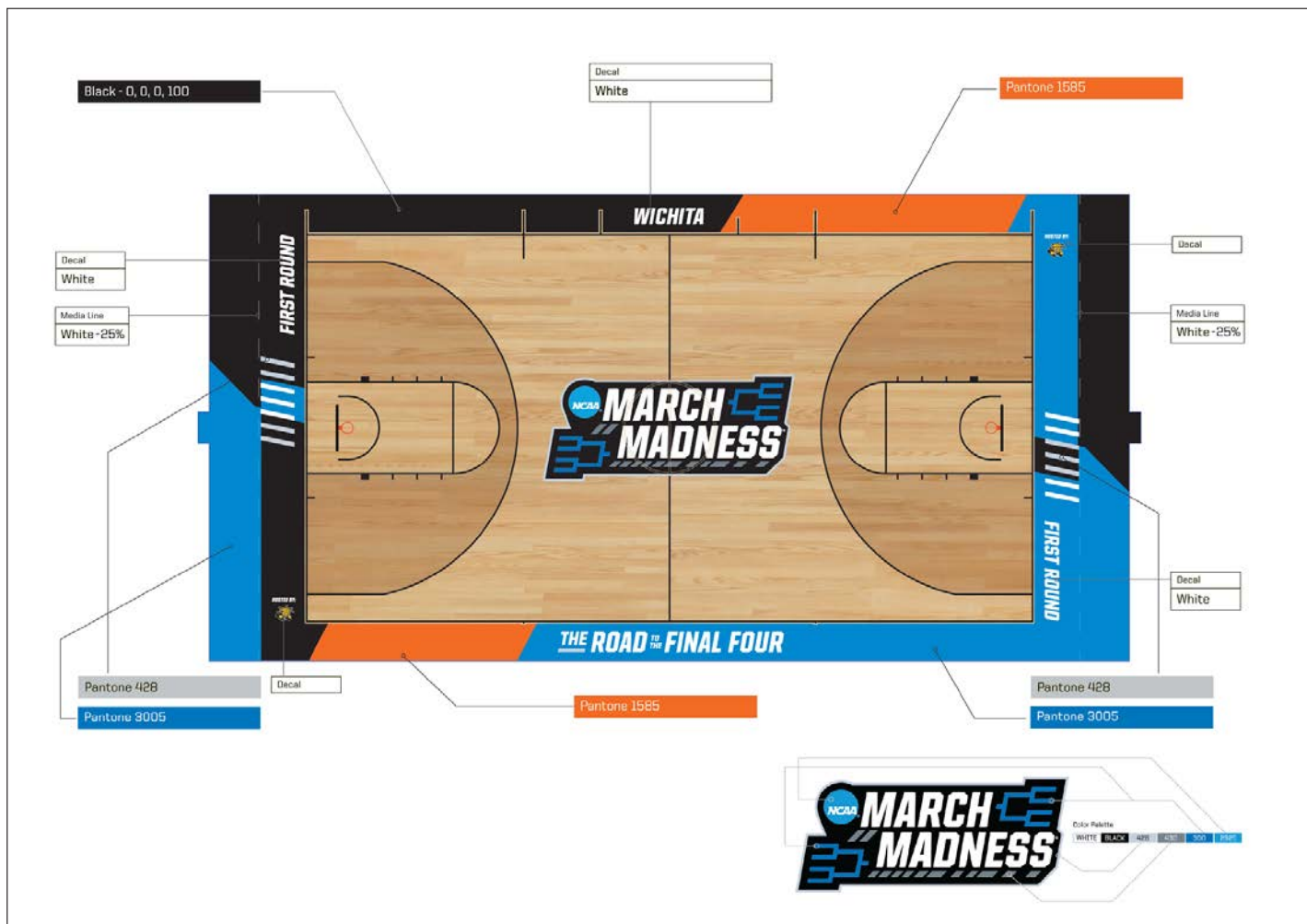
CONOR OCLICK FLOOR

No.	Revised/Issue	Date	By
1	INITIAL LAYOUT	12.09.24	SB





# Color Layout/Court Mockup



# Installation Instructions



## ASSEMBLY, DISASSEMBLY, STORAGE AND CARE

### ASSEMBLY

**NOTE:** Take care to prevent damage to panel side edges when un-stacking panels. Do not slide or drop panels from stack.

1. Identify designated row letters and panel numbers as posted on side edge of panels.
2. Align Panel A1 at designated starting point with outside edge of panel aligned parallel to string or chalk line. Abut end of panel A2 to end of panel A1 and insert Quick Pins at outer and inner edge of panel joints. Continue procedure to complete Row A in numbered order.
3. Begin Row B with starting edge of Panel B1 aligned evenly with starting edge of Panel A1. Align Panel B1 tightly to Panel A1 and insert Quick Pins where required to lock Panel B1 to Row A. Align Panel B2 tightly to end of Panel B1 and to side edge to Row A to allow insertion of Quick Pins. Continue installation of Row B in numbered order.
4. Continue assembly of remaining rows with same positioning and Quick Pin method.

**IMPORTANT:** Do not strike hardware or flooring edges when tapping panels into position. This will damage floor panels.

### RESILIENT PADDED FLOORS:

Offset sleepers as shown below to prevent storage loads on portable panels that include resilient pads.

#### POWERSHOCK PADS



#### SMARTPADS ENCASED



### DISASSEMBLY

1. Begin disassembly in opposite order of assembly. Remove Quick Pins and slide each panel clear of other panel edges before lifting.
2. Stack each row in reverse order of assembly with panels stacked face-to-face (with protective material), and back-to-back.
3. Typically each row should be provided on its own stack or storage cart. Rows that begin and end with half panels (4'x4') should be stacked with both half panels on top of stack.

**Note:** Do not slide panels onto stack, lift to clear lower panel when stacking.



## ASSEMBLY, DISASSEMBLY, STORAGE AND CARE

### ASSEMBLY

**NOTE:** Take care to prevent damage to panel side edges when unstacking panels. Do not slide or drop panels from stack.

1. Identify designated row letters and panel numbers as posted on side edge of panels.
2. Align Panel A1 at designate starting point with outside edge of panel aligned parallel to string or chalk line. Abut end of panel A2 to end of panel A1 and lift steel tab to fit over fused pin and close. Continue procedure to complete Row A in numbered order.
3. Begin Row B with starting edge of Panel B1 aligned steel tab over fused pin in A1, once engaged move panel B1 into A1. Align steel tab of Panel B2 onto the fused pin in Panel A2 and slide tightly to end of Panel B1 and to side edge to Row A. Continue installation of Row B in numbered order.
4. Continue assembly of remaining rows with same positioning of steel tab over fused pin and slide into previous row and panel.

**IMPORTANT:** Do not strike hardware or flooring edges when tapping panels into position. This will damage floor panels.

### RESILIENT PADDED FLOORS:

Offset sleepers as shown below to prevent storage loads on portable panels that include resilient pads.

#### POWERSHOCK PADS



#### SMARTPADS ENCASED



### DISASSEMBLY

1. Begin disassembly in opposite order of assembly. Remove Quick Pins and slide each panel clear of other panel edges before lifting.
2. Stack each row in reverse order of assembly with panels stacked face-to-face (with protective material), and back-to-back.
3. Typically each row should be provided on its own stack or storage cart. Rows that begin and end with half panels (4'x4') should be stacked with both half panels on top of stack.

**Note:** Do not slide panels onto stack, lift to clear lower panel when stacking.

[Watch the QuickLock Classic Installation Video](#)

[Watch the QuickLock Fusion Installation Video](#)

# Caring for your Hardwood System

## CARING FOR YOUR HARDWOOD SYSTEM



### GENERAL CARE

#### Humidity and Ventilation

Since all wood flooring will expand and contract as relative humidity varies, it is important to minimize extremes between low and high. Hardwood flooring is manufactured at moisture content most compatible with a 35%-50% relative humidity range.

Geographical regions and available mechanicals determine the typical range of temperature and humidity for each facility. Maintaining a 15% fluctuation between highest and lowest average indoor relative humidity provides limited shrinkage and growth.

#### Excessive Separation and Tightening

Separation between flooring boards commonly develop during low humidity winter months. The flooring boards typically align and tighten during peak summer months with higher humidity. While moderate shrinkage and expansion is normal, we recommend to consistently use HVAC systems to prevent excessive tightening and/or expansion of your flooring.

#### Keep Water and Grit off the Floor Surface

Prevent tracking in unwanted moisture, dirt, and debris from the outside by placing heavy duty floor mats at any doorway entrance and exits. If leaks are found in the facility, correct immediately to protect your floor from excessive ponding and unwanted water damage. We recommend to have any ductwork insulated, interior drains properly sealed, and any downspouts to be free of any clogs and debris. All of these elements should be routinely inspected, with maintenance provided to insure your facility is operating at full capacity. Any dampness in your building should be brought to the attention of your maintenance engineer or architect.

### IMPORTANT

#### NEVER

shut down the ventilation system in your facility for a prolonged period of time, unless instructed by a professional tradesmen or engineer.

#### NEVER

use household cleaning products or methods of cleaning. Some products can be harmful to the finish of the floor and to the wood itself. If the correct cleaners are not used, you may create an unsafe playing surface for your students or athletes.

#### NEVER

clean your floor using a pressurized water scrubber. Water is your floors worst enemy.

#### NEVER

attempt to modify or repair your hardwood flooring without consulting a Connor Sports approved contractor.

#### NEVER

block or obstruct expansions spaces around the perimeter of the space, or adjacent columns. Be sure to provide adequate expansion spacing in the flooring and sub-floor before securing fixtures, equipment, or bleachers to the substrate.

### DAILY CARE

#### Sweeping the Floor

Floors with heavy use should be dry mopped up to three times a day.

For more thorough cleaning, an untreated dry dust mop may be sprayed with an approved diluted floor cleaner\* that is compatible with the hardwood flooring finish. Apply the cleaning solution to the dust mop and sweep the surface, then replace the soiled mop cover as needed. Do not apply cleaning solutions directly to the floor, do not allow cleaning residue to build up on the floor surface from excess treatment or used dust mops.

#### Spillage/Spots/Stains

Wipe liquid spills and water from the floor immediately with a thoroughly wrung soft cloth or thoroughly wrung mop dampened with approved floor cleaner.

Remove chewing gum by applying crushed ice in a plastic bag until the gum becomes brittle enough to crumble off the floor surface. Clean remaining residue with cloth dampened with floor cleaner.

Remove floor markings and scuffs from shoes, chairs, or equipment by using a cloth dampened with cleaner. We recommend applying the cleaner to a soft cloth to avoid any unwanted scratches.

\* Approved floor cleaners, such as "Poloplaz Hardwood Floor Cleaner", may be sourced through Poloplaz (800-421-7319) [www.poloplaz.com](http://www.poloplaz.com).

\* Your installing contractor or maintenance supplier may offer an alternate cleaning concentrate that can be diluted and used in the manner described, however it must be compatible with the gym finish and contain no oils, silicones or waxes.

### FLOOR LOADS

Significant point and/or area loads can affect the integrity of the wood floor surface and athletic subfloor components.

#### Point Loads

Point load refers to the concentration of weight over a specific are of the hardwood floor surface. Examples of high point loads include wheels that are crowned or tapered rather than those making full and flat contact, and wheels that include center ridges remaining from the molding process. Other examples of destructive point loads include shoe cleats, and table or chair legs with small contact points.

#### Area Loads

Area load refers to the broad area of weight over a larger section of the hardwood flooring more likely to cause damage to a larger surface area and sub-floor. Examples of excessive area loads include prolonged use of stagnant maintenance equipment, scissor lifts, or articulating lifts.

#### Appropriate Protection

Any areas that may require prolonged periods of point or area specific weight increases should be done with the appropriate floor protection. Portable basketball goals and stanchions or equipment specific storage carts may require additional wheels to displace the weight evenly. Maintenance equipment, such as hoists, lifts, or outriggers should be used after protective materials are placed on the floor. This may include additional layers of sheathing and/or a floor finish protector such as red rosin paper.

**Please post in office of superintendent, maintenance engineer, or custodian.** The Connor Sports warranty is solely based on strict compliance with the care and maintenance outlined in this card and general specifications provided at [connorsports.com](http://connorsports.com). Should you require further clarification, please contact Connor Sports Customer Service at 800-283-9522.

# Warranty Example

**WARRANTY CERTIFICATE**  
**CONNOR SPORTS FLOORING CORPORATION**  
**QUICKLOCK PORTABLE FLOOR**

**CONNOR SPORTS FLOORING CORPORATION WARRANTY**

Connor Sports Flooring Corporation hereby warrants the SAMPLE floor provided to SAMPLE in SAMPLE for a period of 1 year(s), beginning on SAMPLE on the terms and conditions contained herein.

Connor Sports Flooring Corporation warrants that the Hard Maple flooring has been manufactured for specified grade, dryness, and milling in accordance with the Maple Flooring Manufacturers Association. All components, including floor finish, game lines and markings, wood subfloor, connector assemblies, interlocking hardware, and resilient pad components if included, shall be constructed as specified and free from manufacturing defects. Any such defects shall be corrected free of charge by Connor Sports Flooring Corporation within thirty (30) days after the defect was discovered by Buyer or should have been discovered.

This warranty is conditioned upon the proper assembly, disassembly, storage, maintenance and care of the floor as described in the Connor Sports Flooring Corporation QUICKLOCK portable floor Assembly Disassembly Storage and Care card (copy attached) as supplied to the Owner.

This warranty is expressly limited to the portable floor system supplied by Connor Sports fire, winds, floods, moisture, other unfavorable abuse, negligent or intentional misconduct, or natural aging of floor finish coats, or Owner's failure to comply with the Usage instructions in installation of the QUICKLOCK portable flooring system.

Connor Sports Flooring Corporation shall not be liable for incidental or consequential losses, damages, or expenses, directly or indirectly arising from the sale, handling or use of the materials (goods) or from any other cause relating thereto, and their liability hereunder in any case is expressly limited to the replacement of materials (goods) not complying with this agreement, or, at Connor Sports Flooring Corporations election, to the repayment of, or crediting Owner with, an amount equal to the purchase price of such materials (goods), whether such claims are for breach of warranty or negligence. Any claim by Owner with reference to the portable floor sold hereunder for any cause shall be deemed waived by Owner unless submitted to Connor Sports Flooring Corporation in writing within thirty (30) days from the date Owner discovered any claim breach.

It is hereby expressly agreed that Connor Sports Flooring Corporation shall not be responsible for any liability for incidental, consequential, multiple or punitive damages.

<p><b>Connor Sports Flooring Corporation</b>          BY _____</p> <p><b>Name &amp; Title</b>          Date _____</p> <p><b>PLEASE MAIL TO:</b>  <b>CONNOR SPORTS FLOORING</b>  <b>PO BOX 246, AMASA MI 49903</b></p>	<p><b>Accepted by Owner</b></p> <p>BY _____  <b>Signature</b></p> <p>_____  <b>Print Name &amp; Title</b></p> <p>Date _____</p> <p>_____  <b>Company/Entity</b></p>
---	---