

# PERMAFLEX™ II

**SPECIALTY HARDWOOD SYSTEM**



[connorsports.com](http://connorsports.com)



**CONNOR SPORTS**  
*Where Champions Play™*



**CONNOR SPORTS**  
Where Champions Play™

# PERMAFLEX™ II

## SPECIALTY HARDWOOD SYSTEM

The combination of predrilled steel sleeper anchor pockets for simplified concrete anchoring and time-tested Rezill™ pads generate a high-performing subfloor.



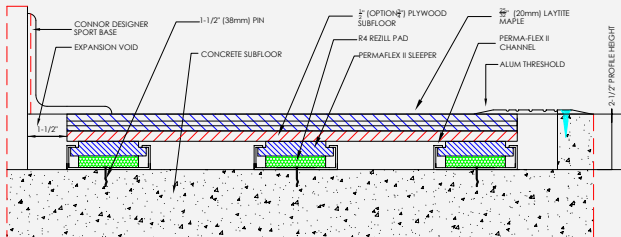
- MFMA Northern hard maple
- Rezill pads for excellent life and load
- Steel encased flexible sleeper and plywood panel
- Pre-drilled sleeper anchor pockets for concrete attachment



University of Victoria

#### NOTES

- 1) SLEEPERS ARE 16" ON CENTER
- 2) PLYWOOD 5/8" (OPTIONAL) 7/8" THICK
- 3) MAPLE LAYITTE FLOORING IS 5/8" (20mm) THICK
- 4) SLAB DEPRESSION 2-1/2" (2-3/4" W/ 5/8" PLYWOOD)



**Manufacturing:**  
ISO 14001:2015



**Certified Testing:**  
ISS Scientific Body  
Membership



**Recycled Contribution:**  
Includes components  
with recycled content



**Green Status:**  
Managed Forests,  
Certification Available



**Testing Laboratory:**  
United States Sports  
Surfacing Laboratory

Customer Service: 800.283.9522 | [info@connorsports.com](mailto:info@connorsports.com) | [connorsports.com/products](http://connorsports.com/products)

**Where Champions Play™**

**TARAFLEX**  
— SPORTS FLOORING —

