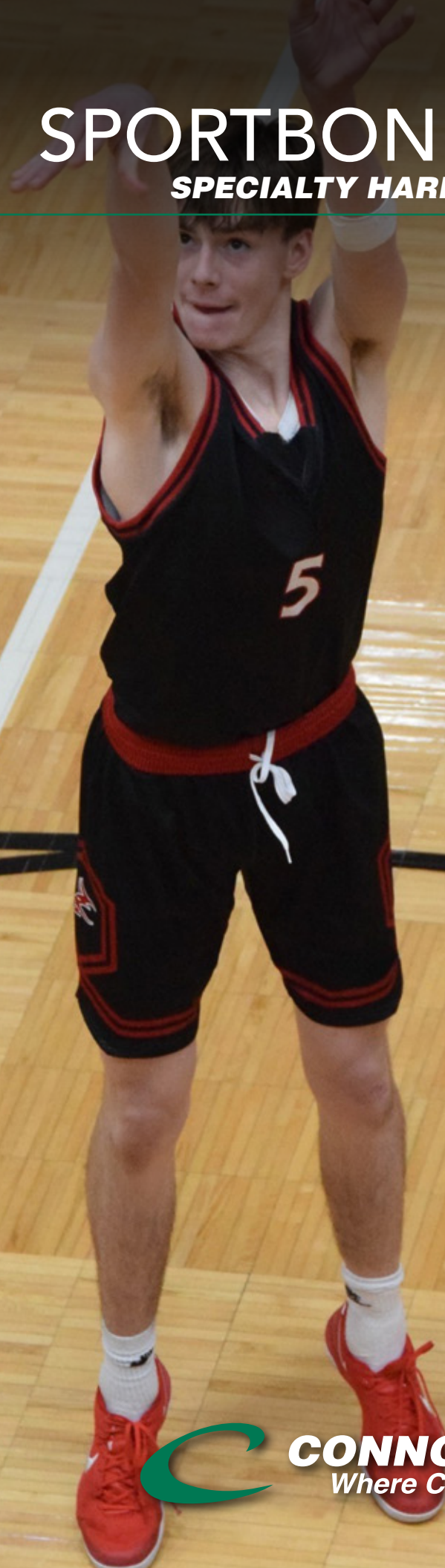


SPORTBOND™ PLUS

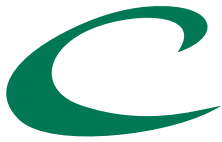
SPECIALTY HARDWOOD SYSTEM



connorsports.com



CONNOR® SPORTS
Where Champions Play™



CONNOR SPORTS
Where Champions Play™



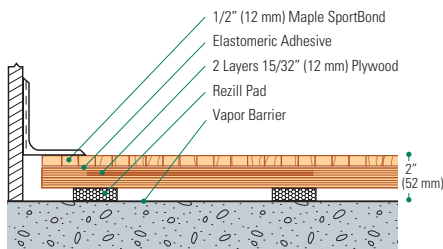
- MFMA Northern hard maple
- Rezill 7/16" (11 mm) pads
- Two layers of 15/32" (12 mm) APA rated plywood subfloor

SPORTBOND™ PLUS SPECIALTY HARDWOOD SYSTEM

This system's parquet-type panels are primarily manufactured from vertical grain maple to increase dimensional stability for environments with broad seasonal conditions, while providing a uniquely pleasing visual aesthetic. Optional use of 7/16" (11 mm) Rezill™ or NeoShok™ pads provide DIN and PUR compliance.



SportBond Plus Wall Base Detail



Manufacturing:
ISO 14001:2015



Recycled Contribution:
Includes components with recycled content



Testing Laboratory:
United States Sports Surfacing Laboratory

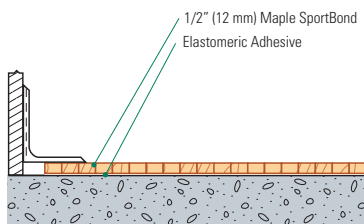


Certified Testing:
ISS Scientific Body Membership

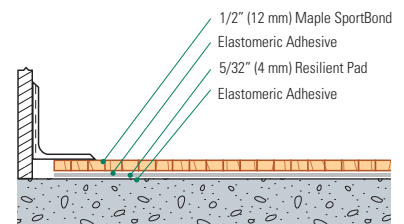


Green Status:
Managed Forests, Certification Available

SportBond Wall Base Detail



SportBond Flex Wall Base Detail



Customer Service: 800.283.9522 | info@connorsports.com | connorsports.com/products

Where Champions Play™

TARAFLEX
— SPORTS FLOORING —

