

# PERMAFLEX™

**SPECIALTY HARDWOOD SYSTEM**

[connorsports.com](http://connorsports.com)



**CONNOR SPORTS**  
*Where Champions Play™*



**CONNOR SPORTS**  
Where Champions Play™

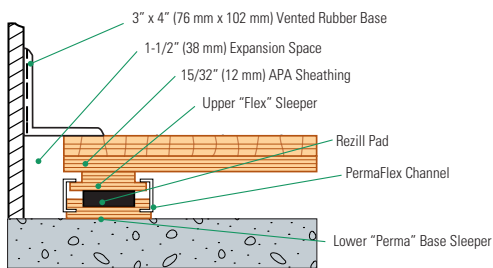


# PERMAFLEX™ SPECIALTY HARDWOOD SYSTEM

This unique subfloor design encapsulates Rezill™ pads between an upper flex sleeper and a lower base sleeper to extend the system's resilient life and accommodate heavy non-athletic loads through use of manufactured 16-gauge steel-encased sleeper subfloor supports. A truss support option allows for profile height adjustment ideal for retrofit installations.



Wall Base Detail

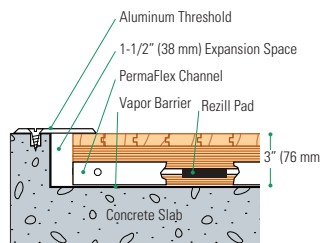


**Manufacturing:**  
ISO 14001:2015



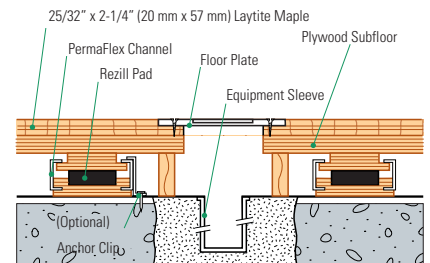
**Recycled Contribution:**  
Includes components with recycled content

Threshold Detail ( Optional Accessory )



**Testing Laboratory:**  
United States Sports Surfacing Laboratory

Equipment Detail ( Optional Accessory )



**Certified Testing:**  
ISS Scientific Body Membership



**Green Status:**  
Managed Forests, Certification Available

Customer Service: 800.283.9522 | [info@connorsports.com](mailto:info@connorsports.com) | [connorsports.com/products](http://connorsports.com/products)

**Where Champions Play™**

**TARAFLEX**  
— SPORTS FLOORING —

