

PERMAFLEX™ II

SPECIALTY HARDWOOD SYSTEM



connorsports.com



CONNOR SPORTS
Where Champions Play™



CONNOR SPORTS
Where Champions Play™

PERMAFLEX™ II

SPECIALTY HARDWOOD SYSTEM

The combination of predrilled steel sleeper anchor pockets for simplified concrete anchoring and time-tested Rezill™ pads generate a high-performing subfloor.

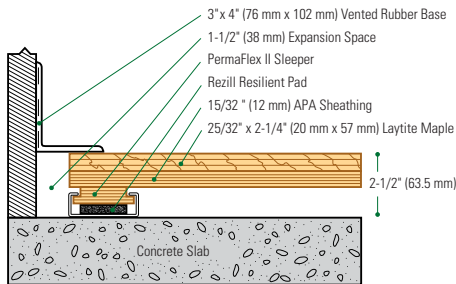


- MFMA Northern hard maple
- Rezill pads for excellent life and load
- Steel encased flexible sleeper and plywood panel
- Pre-drilled sleeper anchor pockets for concrete attachment



University of Victoria

Wall Base Detail

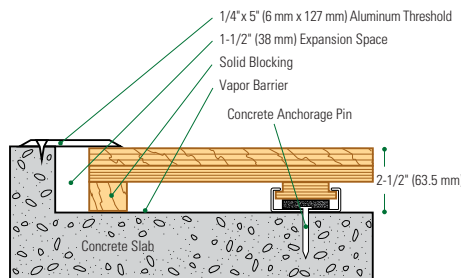


Manufacturing:
ISO 14001:2015



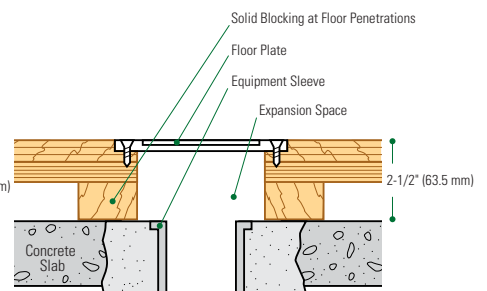
Recycled Contribution:
Includes components with recycled content

Threshold Detail (Optional Accessory)



Testing Laboratory:
United States Sports Surfacing Laboratory

Equipment Detail (Optional Accessory)



Certified Testing:
ISS Scientific Body Membership



Green Status:
Managed Forests, Certification Available

Customer Service: 800.283.9522 | info@connorsports.com | connorsports.com/products

Where Champions Play™

TARAFLEX
— SPORTS FLOORING —

