

# DURACUSHION™ I

**SPECIALTY HARDWOOD SYSTEM**



[connorsports.com](http://connorsports.com)



**CONNOR SPORTS**  
*Where Champions Play™*



**CONNOR SPORTS**  
Where Champions Play™

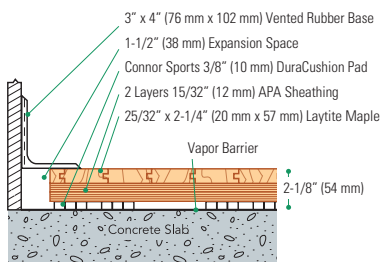
# DURACUSHION™ I SPECIALTY HARDWOOD SYSTEM

Assembled using standard 3/8" (10 mm) DuraCusion™ PVC resilient pads and a double layer of sheathing to provide a simple and economical floor.

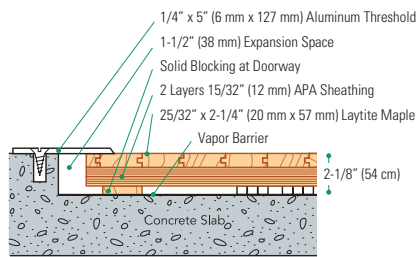


- 3/8" (10 mm) DuraCusion™ pvc resilient pads
- MFMA Northern hard wood
- 2 layers of 15/32" (12mm) APA rated plywood sheathing (or manufacturers approved equal), Exposure 1

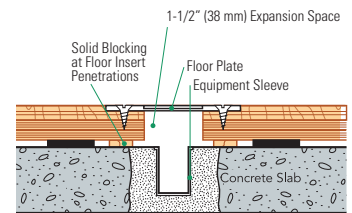
Wall Base Detail



Threshold Detail (Optional Accessory)



Equipment Detail (Optional Accessory)



**Manufacturing:**  
ISO 14001:2015



**Testing Laboratory:**  
United States Sports  
Surfacing Laboratory



**Certified Testing:**  
ISS Scientific Body  
Membership



**Green Status:**  
Managed Forests,  
Certification Available

Customer Service: 800.283.9522 | [info@connorsports.com](mailto:info@connorsports.com) | [connorsports.com/products](http://connorsports.com/products)

**Where Champions Play™**

