

SPOTLIGHT STAGE II

SPECIALTY STAGE FLOORING

connorsports.com/dance/connor-dance-stage



CONNOR DANCE
Performance Elevated



CONNOR DANCE
Performance Elevated

SPOTLIGHT STAGE II

SPECIALTY STAGE FLOORING

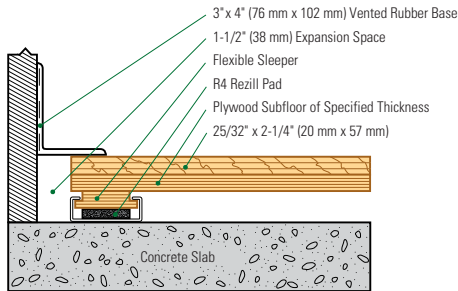
Spotlight Stage systems provide a range of performance and construction options that provide durable resilient stage floor systems.

- Available with MFMA Northern Hard Maple and additional project specific wear layers
- Steel encased flexible sleeper and plywood panel
- Pre-drilled sleeper anchor pockets for concrete attachment

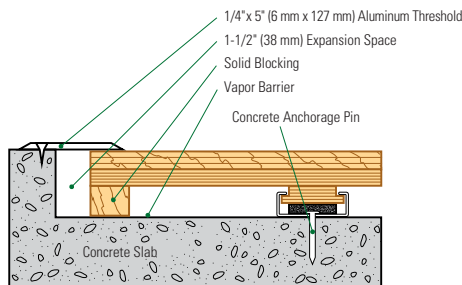


Liberty University School of Music

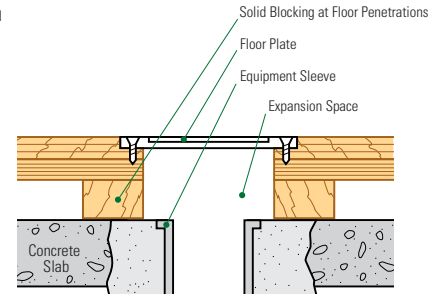
Wall Base Detail



Threshold Detail (Optional Accessory)



Equipment Detail (Optional Accessory)



Standard Profile Height: 2 1/2" (64 mm) Optional Profile Height: 2 3/4" (70 mm)

Manufacturing:
ISO 14001:2004
CERTIFIED



Recycled Contribution:
Includes components with recycled content



Testing Laboratory:
United States Sports Surfacing Laboratory



Certified Testing:
ISS Scientific Body Membership



Green Status:
Managed Forests, Certification Available

Customer Service: 800.283.9522 | info@connorsports.com | connorsports.com/dance/connor-dance-stage

