

SPOTLIGHT STAGE III

SPECIALTY STAGE FLOORING

connorsports.com/dance/connor-dance-stage



CONNOR DANCE
Performance Elevated



CONNOR DANCE Performance Elevated

SPOTLIGHT STAGE III SPECIALTY STAGE FLOORING

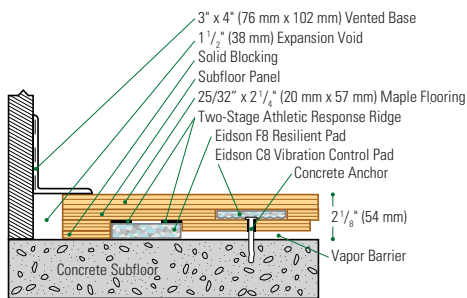
Spotlight Stage systems provide a range of performance and construction options that provide durable resilient stage floor systems.

- Available with MFMA Northern Hard Maple and additional project specific wear layers
- Dual Dampening Vibration Control™ reacts to both light and heavy loads throughout the stage surface
- Two stage pad design creates the ultimate combination for multiple disciplines of performance providing resilience, response, and uniformity

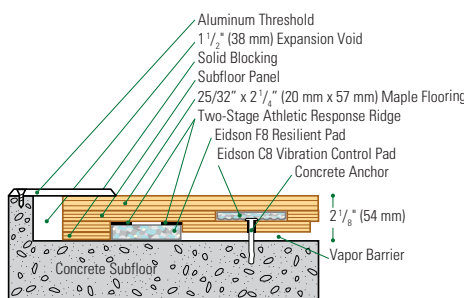


Liberty University School of Music

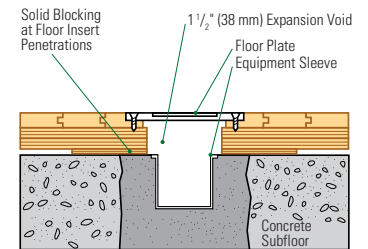
Wall Base Detail



Threshold Detail (Optional Accessory)



Equipment Detail (Optional Accessory)



Slab Depression: 25/32" (20 mm) flooring – 2 1/8" (54 mm) • 33/32" (26 mm) flooring – 2 3/8" (60 mm)



Recycled Contribution:
Includes components with recycled content



Testing Laboratory:
United States Sports Surfacing Laboratory



Certified Testing:
ISS Scientific Body Membership



Green Status:
Managed Forests, Certification Available

Manufacturing:
ISO 14001:2004
CERTIFIED

Customer Service: 800.283.9522 | info@connorsports.com | connorsports.com/dance/connor-dance-stage

