

PRO FORMA II

CONNOR DANCE STUDIO & STAGE FLOOR SYSTEMS™
Premium Studio Subfloor

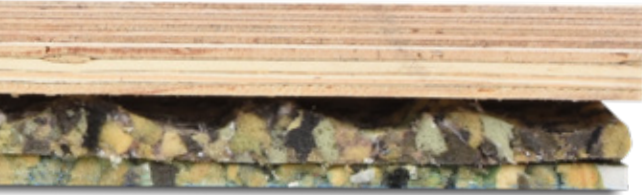


connorsports.com

Image courtesy of Wear Moi Dancewear

 **CONNOR SPORTS**
Where Champions Play™

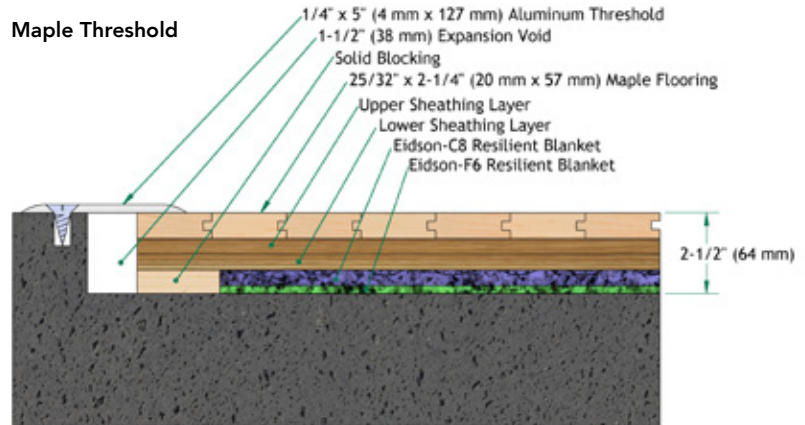
PRO FORMA II



Connor Dance Floor Systems are engineered sprung solutions that balance the safety and wellness of the performer with the uniformity and control necessary for optimized performance. Each continuous, integrated subfloor design provides consistent sound and performance across the whole of the studio and stage surface. Pro Forma II has a mid-profile height, making it ideal for multi-purpose use while providing uniformity in shock absorption and vertical deflection. Pro Forma II is ideal for all dance disciplines when used as a system with Connor Dance Vinyl.



Maple Threshold

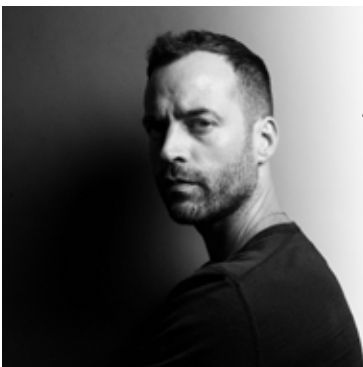
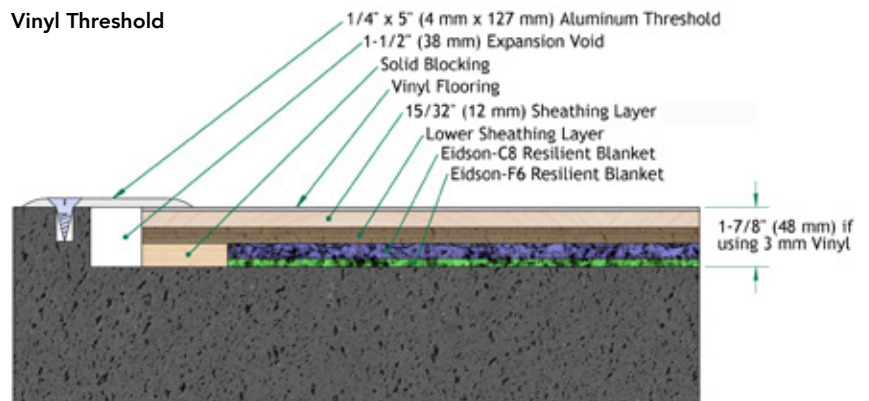


Product Specifications:

Installation:	Floating
Shock Absorption (ANSI E2.26):	56%
Rolling Load:	1500N
Vertical Deflection:	3.6
Area Deflection:	7

For optimal safety and performance, install with a Connor Sport Dance Vinyl. For most updated specification, installation, and product detail, visit connorsports.com.

Vinyl Threshold



“Dance is an endless commitment to preparation, to practice, to passion. The floor must commit to support and strengthen the dancer as much as the dancer commits to their art.”

— Benjamin Millepied, L.A. Dance Project

Customer Service:
1 800 283 9522
info@connorsports.com
connorsports.com



DPF25S

a company of **Gerflor**