

# SPOTLIGHT STAGE III

*SPECIALTY STAGE FLOORING*

[connorsports.com](http://connorsports.com)



**CONNOR SPORTS**  
*Where Champions Play™*



# CONNOR SPORTS

Where Champions Play™

# SPOTLIGHT STAGE III

## SPECIALTY STAGE FLOORING

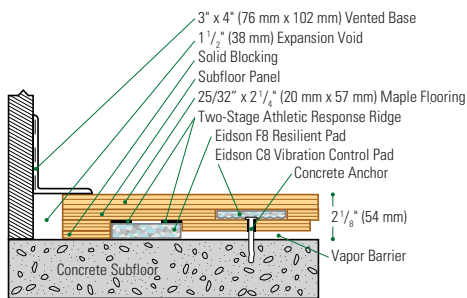
Spotlight Stage systems provide a range of performance and construction options that provide durable resilient stage floor systems.

- Available with MFMA Northern Hard Maple and additional project specific wear layers
- Dual Dampening Vibration Control™ reacts to both light and heavy loads throughout the stage surface
- Two stage pad design creates the ultimate combination for multiple disciplines of performance providing resilience, response, and uniformity

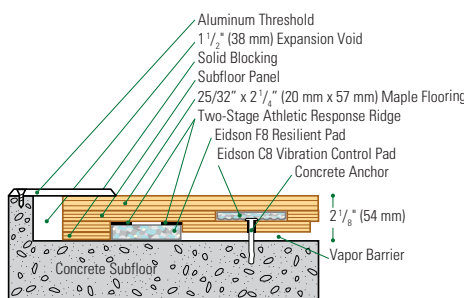


Liberty University School of Music

### Wall Base Detail

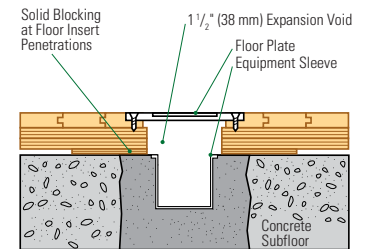


### Threshold Detail (Optional Accessory)



Slab Depression: 25/32" (20 mm) flooring – 2 1/8" (54 mm) • 33/32" (26 mm) flooring – 2 3/8" (60 mm)

### Equipment Detail (Optional Accessory)



Manufacturing:  
**ISO 14001:2004**  
CERTIFIED



**Recycled Contribution:**  
Includes components with recycled content



**Testing Laboratory:**  
United States Sports Surfacing Laboratory



**Certified Testing:**  
ISS Scientific Body Membership



**Green Status:**  
Managed Forests, Certification Available

Customer Service: 800.283.9522 | info@connorsports.com | connorsports.com/products

Where Champions Play™

