

# SPOTLIGHT STAGE III

*SPECIALTY STAGE FLOORING*

[connorsports.com](http://connorsports.com)



**CONNOR SPORTS**  
*Where Champions Play™*





**CONNOR SPORTS**  
Where Champions Play™

**SPOTLIGHT STAGE III**  
**SPECIALTY STAGE FLOORING**

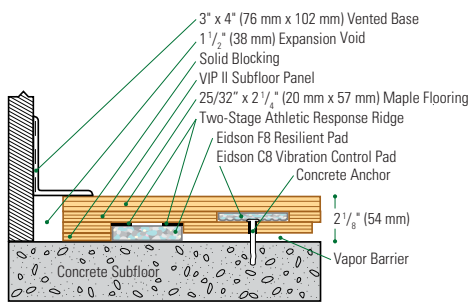
Spotlight Stage systems provide a range of performance and construction options that provide durable resilient stage floor systems.

- Available with MFMA Northern Hard Maple and project specific wear layers
- Pad options that provide resilience and durability
- Subfloor designs to allow for project specific loads

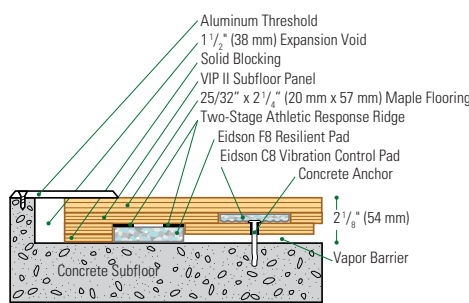


Liberty University School of Music

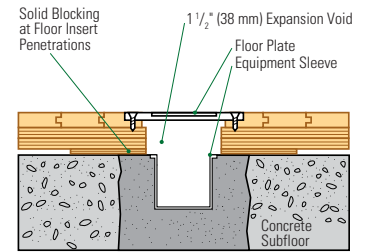
**Wall Base Detail**



**Threshold Detail (Optional Accessory)**



**Equipment Detail (Optional Accessory)**



Slab Depression: 25/32" (20 mm) flooring – 2 1/8" (54 mm) • 33/32" (26 mm) flooring – 2 3/8" (60 mm)

Manufacturing:  
**ISO 14001:2004**  
CERTIFIED



**Recycled Contribution:**  
Includes components with recycled content



**Testing Laboratory:**  
United States Sports Surfacing Laboratory



**Certified Testing:**  
ISS Scientific Body Membership



**Green Status:**  
Managed Forests, Certification Available

Customer Service: 800.283.9522 | info@connorsports.com | connorsports.com/products

**Where Champions Play™**

