

# DURACUSHION™ III

**SPECIALTY HARDWOOD SYSTEM**



[connorsports.com](http://connorsports.com)



**CONNOR SPORTS**  
*Where Champions Play™*



**CONNOR SPORTS**  
Where Champions Play™

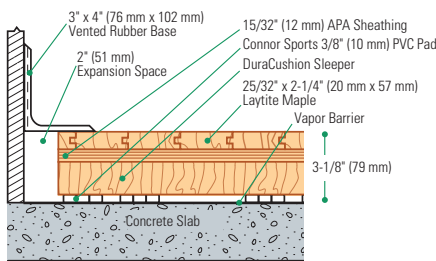
# DURACUSHION™ III SPECIALTY HARDWOOD SYSTEM

Assembled using standard 3/8" (10 mm) DuraCushion™ PVC resilient pads and dimensioned softwood sleepers to provide a simple and economical floating floor system.

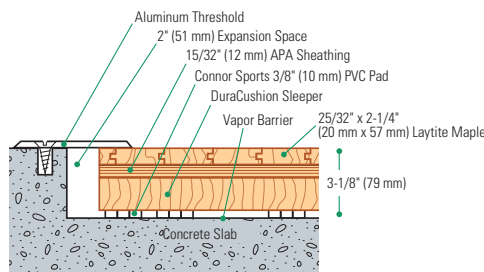


- 3/8" (10 mm) DuraCushion pvc resilient pads
- MFMA Northern hard wood
- Nominal 2" x 3" (38 mm x 64 mm) softwood sleeper
- 2 layers of 15/32" (12mm) APA rated plywood sheathing (or manufacturers approved equal), Exposure 1

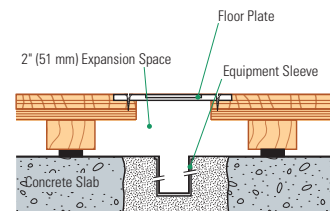
Wall Base Detail



Threshold Detail (Optional Accessory)



Equipment Detail (Optional Accessory)



Manufacturing:  
**ISO 14001:2004**  
CERTIFIED



Testing Laboratory:  
United States Sports  
Surfacing Laboratory



Certified Testing:  
ISS Scientific Body  
Membership



Green Status:  
Managed Forests,  
Certification Available

Customer Service: 800.283.9522 | [info@connorsports.com](mailto:info@connorsports.com) | [connorsports.com/products](http://connorsports.com/products)

**Where Champions Play™**

