

# SPORTBOND™ PLUS

**SPECIALTY HARDWOOD SYSTEM**



[connorsports.com](http://connorsports.com)



**CONNOR SPORTS**  
*Where Champions Play™*



**CONNOR SPORTS**  
Where Champions Play™



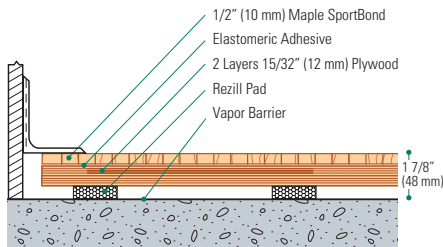
- MFMA Northern hard maple
- Rezill 7/16" (11 mm) pads
- Two layers of 15/32" (12 mm) APA rated plywood subfloor

# SPORTBOND™ PLUS SPECIALTY HARDWOOD SYSTEM

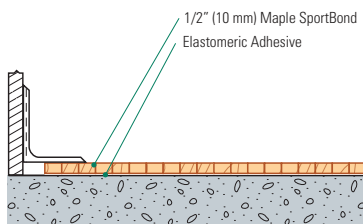
This system's parquet-type panels are primarily manufactured from vertical grain maple to increase dimensional stability for environments with broad seasonal conditions, while providing a uniquely pleasing visual aesthetic. Optional use of 7/16" (11 mm) Rezill™ or NeoShok™ pads provide DIN and PUR compliance.



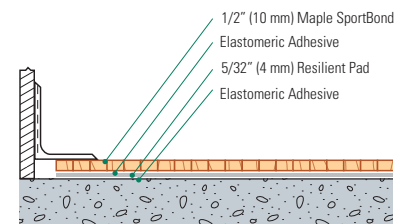
**SportBond Plus Wall Base Detail**



**SportBond Wall Base Detail**



**SportBond Flex Wall Base Detail**



**Manufacturing:**  
ISO 14001:2004  
CERTIFIED



**Recycled Contribution:**  
Includes components with recycled content



**Testing Laboratory:**  
United States Sports Surfacing Laboratory



**Certified Testing:**  
ISS Scientific Body Membership



**Green Status:**  
Managed Forests, Certification Available

Customer Service: 800.283.9522 | [info@connorsports.com](mailto:info@connorsports.com) | [connorsports.com/products](http://connorsports.com/products)

**Where Champions Play™**

