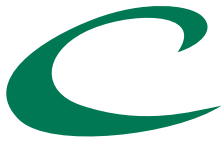


VIP II™
PERFORMANCE HARDWOOD SYSTEM

connorsports.com

 **CONNOR SPORTS**
Where Champions Play™

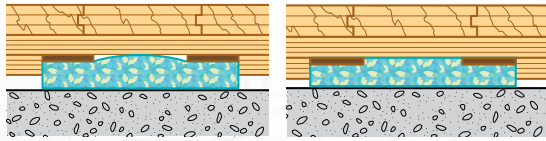


VIP II™

PERFORMANCE HARDWOOD SYSTEM

CONNOR SPORTS Where Champions Play™

Our most advanced premium performance flooring system featuring our patented Dual Dampening Vibration Control™ and Athletic Response Ridge™ for the ultimate combination of multi-athlete resilience, comfort and uniformity.



STAGE ONE

Reacting to light athletic loads or individual players

STAGE TWO

Reacting to heavy athletic loads or multiple participants



Wofford College

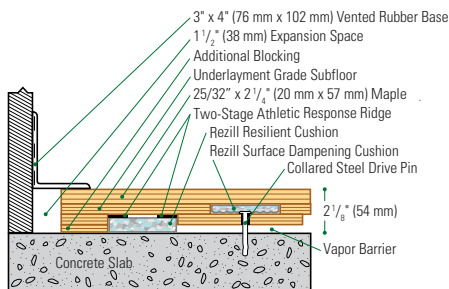


Northwestern University

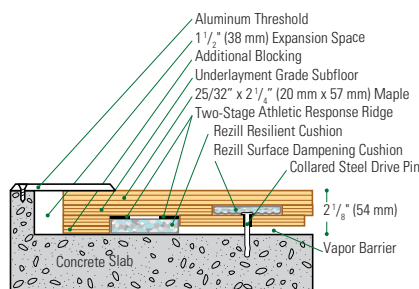


Golden 1 Center, Sacramento Kings

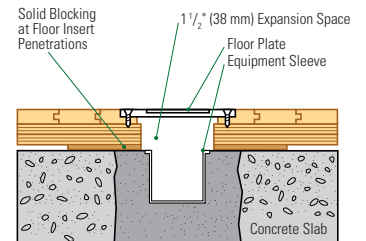
Wall Base Detail



Threshold Detail (Optional Accessory)



Equipment Detail (Optional Accessory)



Slab Depression: 25/32" (20 mm) flooring - 2 1/8" (54 mm) • 33/32" (26 mm) flooring - 2 1/8" (60 mm)

Manufacturing: ISO 14001:2004 CERTIFIED



Recycled Contribution: Includes components with recycled content



Testing Laboratory: United States Sports Surfacing Laboratory



Certified Testing: ISS Scientific Body Membership



Green Status: Managed Forests, Certification Available

Customer Service: 800.283.9522 | info@connorsports.com | connorsports.com/products

Where Champions Play™



a company of Gerflor theflooringroup