

# S-CHANNEL™

**SPECIALTY HARDWOOD SYSTEM**

[connorsports.com](http://connorsports.com)



**CONNOR SPORTS**  
*Where Champions Play™*



**CONNOR SPORTS**  
Where Champions Play™

# S-CHANNEL™ SPECIALTY HARDWOOD SYSTEM

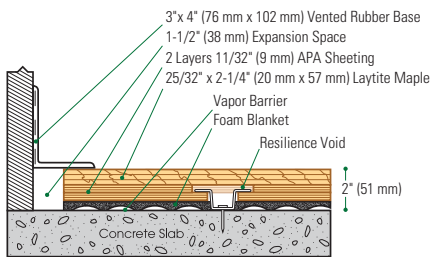
Specially designed subfloor anchor pockets include substrate anchor channels to allow for lateral movement of subfloor panels, accommodating environmental influence of seasonal flooring shrinkage and expansion. Use of rebonded open cell foam blanket padding makes this system both DIN and PUR compliant.



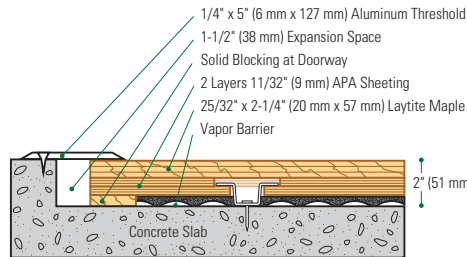
- MFMA Northern hard maple
- Heavy-duty, buckle resistant steel channel provides great resistance to pin pull through and upward pressure
- Rebonded open cell flexible polyurethane foam blanket
- Manufactured pre-assembled plywood panels



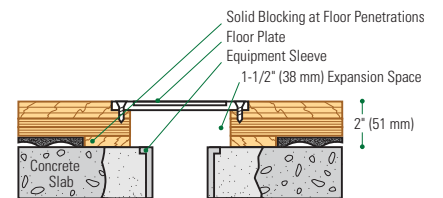
### Wall Base Detail



### Threshold Detail (Optional Accessory)



### Equipment Detail (Optional Accessory)



**Manufacturing:**  
ISO 14001:2004  
CERTIFIED



**Recycled Contribution:**  
Includes components with recycled content



**Testing Laboratory:**  
United States Sports Surfacing Laboratory



**Certified Testing:**  
ISS Scientific Body Membership



**Green Status:**  
Managed Forests, Certification Available

Customer Service: 800.283.9522 | [info@connorsports.com](mailto:info@connorsports.com) | [connorsports.com/products](http://connorsports.com/products)

**Where Champions Play™**

**TARAFLEX**  
SPORTS FLOORING

