

RETROFLEX™

SPECIALTY HARDWOOD SYSTEM

connorsports.com



CONNOR SPORTS
Where Champions Play™



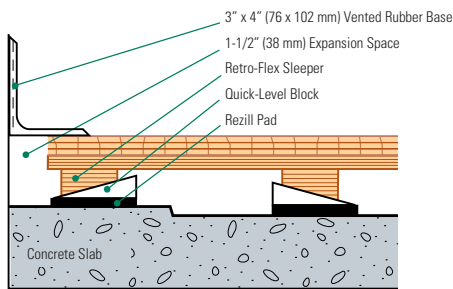
CONNOR SPORTS
Where Champions Play™



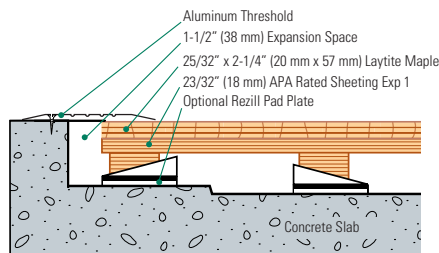
RETROFLEX™ SPECIALTY HARDWOOD SYSTEM

Engineering using specially machined LVL plywood sleepers and Quick-Level Blocks allows this system to simply and cost effectively address uneven substrates commonly found in retrofit installations by eliminating the need for extensive concrete leveling or grinding. DIN compliant.

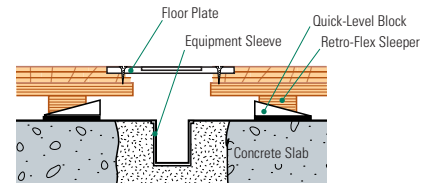
Wall Base Detail



Threshold Detail (Optional Accessory)



Equipment Detail (Optional Accessory)



Manufacturing:
ISO 14001:2004
CERTIFIED



Recycled Contribution:
Includes components with recycled content



Testing Laboratory:
United States Sports Surfacing Laboratory



Certified Testing:
ISS Scientific Body Membership



Green Status:
Managed Forests, Certification Available

Customer Service: 800.283.9522 | info@connorsports.com | connorsports.com/products

Where Champions Play™

