

# ELASTILOCK™

**RECYCLED INTERLOCKING TILES**

[connorsports.com](http://connorsports.com)



**CONNOR SPORTS**  
*Where Champions Play™*



**CONNOR SPORTS**  
Where Champions Play™

**WEIGHT & FITNESS:**

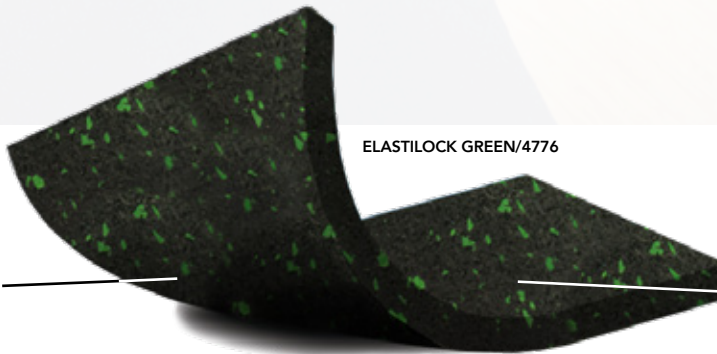
- Exercise equipment friendly
- Free weight platform suitable
- Ice rink walk off & locker room suitable

**ENVIRONMENTAL IMPACT:**

- Up to 85% recycled content
- Contains post-consumer tires and rubber
- Made in the USA

**ELASTILOCK™**  
**RECYCLED INTERLOCKING TILES**

Made from recycled material, this interlocking tile rubber surface provides a basic yet environmentally conscious flooring solution for athletic training applications such as freeweight areas, ice rinks, locker rooms and other fitness spaces.



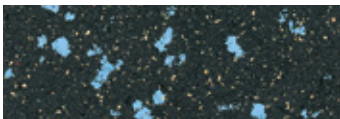
ELASTILOCK GREEN/4776

**BASIC COLORS**

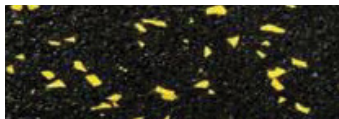
Standard black base color with six standard fleck colors for basic design coordination.

**BASIC CONSTRUCTION**

Industry standard recycled rubber construction offered in 8mm thick, 24" x 24" interlocking tiles.



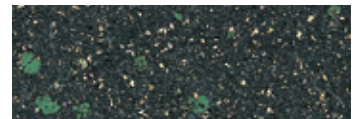
BLUE/2043



YELLOW/2063



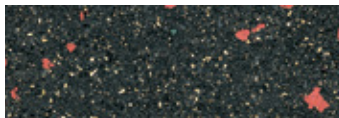
BLACK/2546



GREEN/4776



GREY/2046



RED/2165

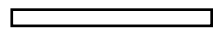
**GAME LINE PAINT COLOR OPTIONS**



Red



Green



White



Black



Yellow



Blue

Customer Service: 800.283.9522 | [info@connorsports.com](mailto:info@connorsports.com) | [connorsports.com/products](http://connorsports.com/products)

**Where Champions Play™**

