

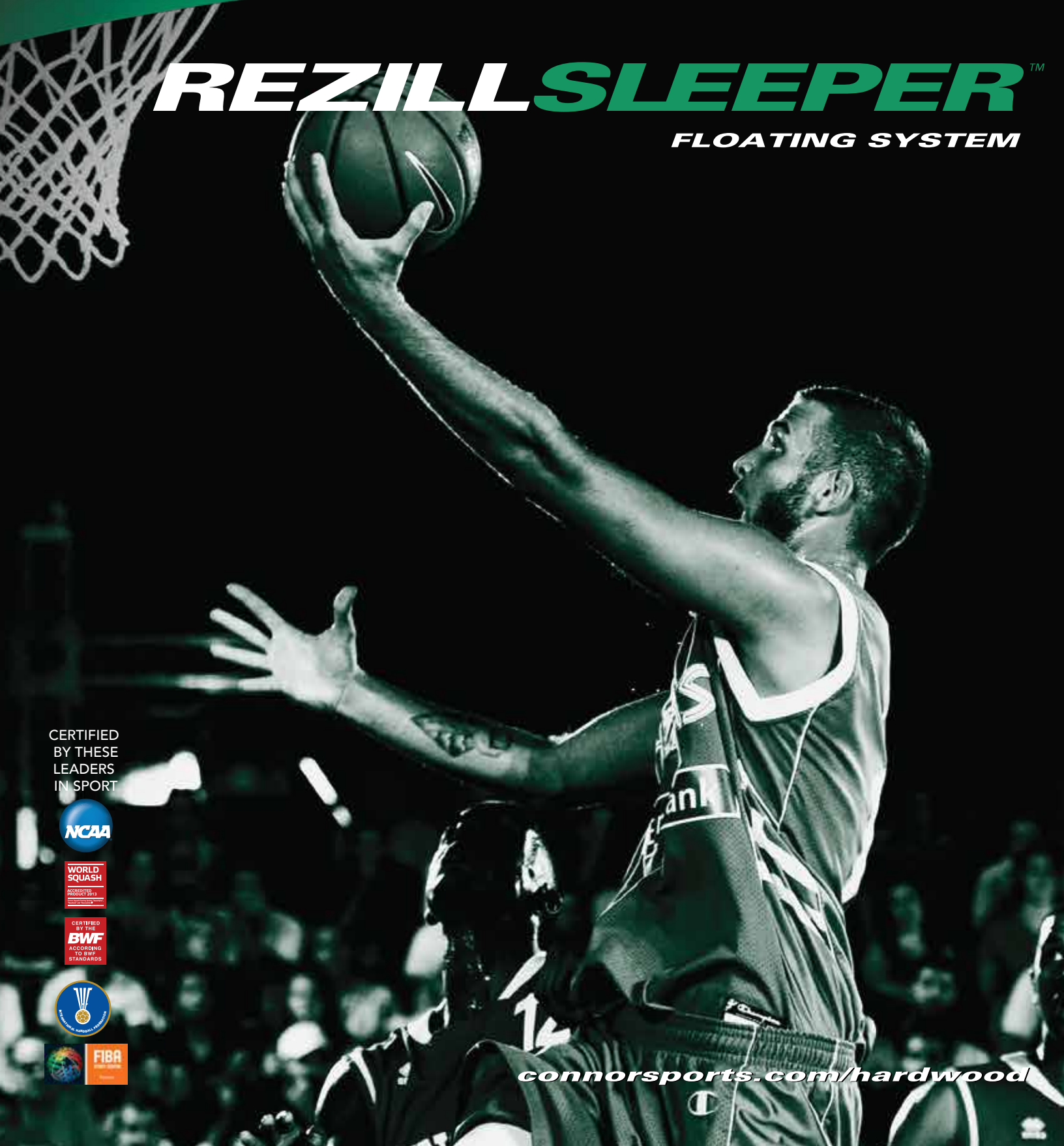


**CONNOR SPORTS**

**HARDWOOD  
SYSTEMS**

**REZILLSLEEPER™**

**FLOATING SYSTEM**



CERTIFIED  
BY THESE  
LEADERS  
IN SPORT



[connorsports.com/hardwood](http://connorsports.com/hardwood)

# REZILLSLEEPER™

## FLOATING SYSTEM

Connor Sports • 800.283.9522 • 847.290.9020 • info@connorsports.com • connorsports.com/hardwood

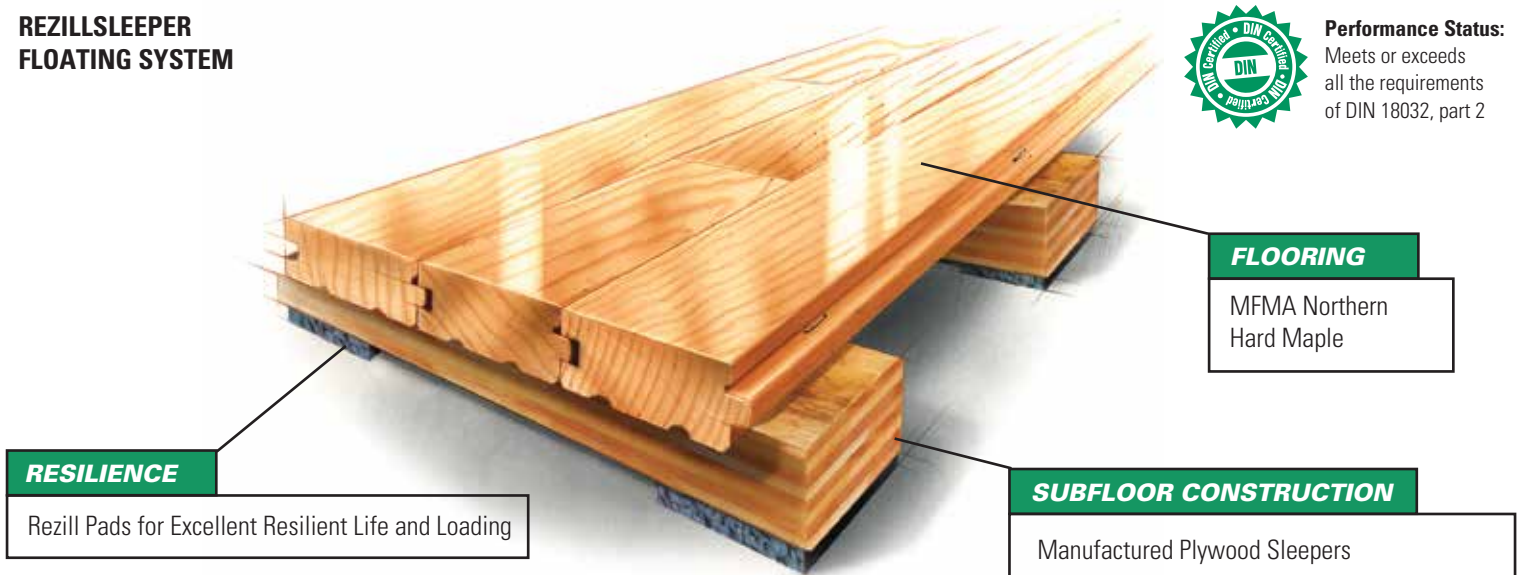


RezillSleeper includes sound UL grade plywood sleepers supported by resilient Rezill pads. Plywood sleepers provide resistance to bowing and twisting as commonly associated with softwood dimensioned sleepers.

### REZILLSLEEPER FLOATING SYSTEM



**Performance Status:**  
Meets or exceeds  
all the requirements  
of DIN 18032, part 2



#### RESILIENCE

Rezill Pads for Excellent Resilient Life and Loading

#### FLOORING

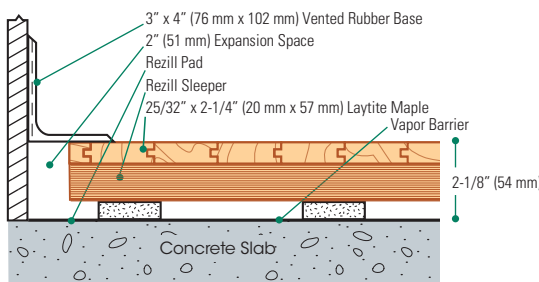
MFMA Northern  
Hard Maple

#### SUBFLOOR CONSTRUCTION

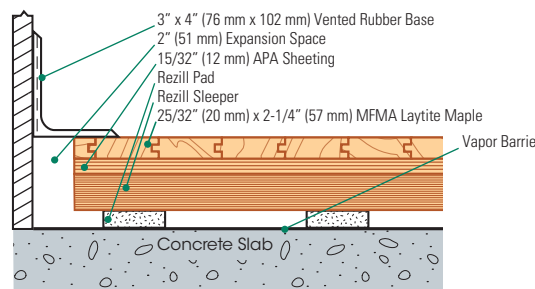
Manufactured Plywood Sleepers

**Slab Depression:** 25/32" (20 mm) flooring - 2 1/8" (54 mm) • 33/32" (26 mm) flooring - 2 3/8" (60 mm) • Adjust if adding plywood

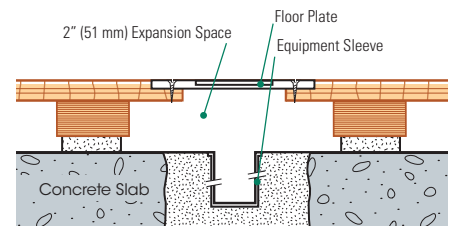
#### Wall Base Detail



#### Wall Base Detail (Rezill Sleeper Subfloor)



#### Equipment Detail (Optional Accessory)



**Manufacturing:**  
ISO 9001:2008  
CERTIFIED  
ISO 14001:2004  
CERTIFIED



**Recycled Contribution:**  
RezillSleeper Subfloor System  
includes components with  
recycled content



**Testing Laboratory:**  
United States Sports  
Surfacing Laboratory



**Certified Testing:**  
ISSS Scientific  
Body Membership



**Green Status**  
Managed Forests,  
Certification Available



**Environmental Product Declaration**  
The first sports floor manufacturer to publish  
UL certified product-specific environmental  
performance in compliance with LEED V.4