



**CONNOR<sup>®</sup> SPORTS**

**HARDWOOD  
SYSTEMS**

**REZILLCHANNEL-01<sup>™</sup>**

**FIXED RESILIENT SYSTEM**



CERTIFIED  
BY THESE  
LEADERS  
IN SPORT



[connorsports.com/hardwood](http://connorsports.com/hardwood)

# REZILLCHANNEL-01™

## FIXED RESILIENT SYSTEM

Connor Sports • 800.283.9522 • 847.290.9020 • info@connorsports.com • connorsports.com/hardwood



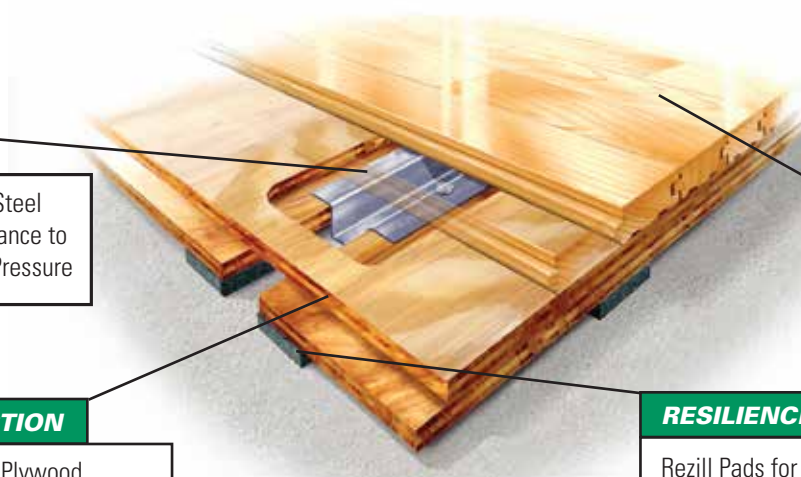
RezillChannel-01 incorporates resilient Rezill pads at a rate of two pads per square foot supporting pre-manufactured double layer plywood subfloor panels.

Subfloor anchor pockets include placement of substrate anchor channels, which allow for lateral movement of subfloor panels when influenced by seasonal flooring shrinkage and expansion.

### REZILLCHANNEL-01 FIXED RESILIENT SYSTEM



**Performance Status:**  
Meets or exceeds all the requirements of DIN 18032, part 2



#### ANCHORAGE

Heavy-duty, Buckle Resistant Steel Channel Provides Great Resistance to Pin Pull Through and Upward Pressure

#### FLOORING

MFMA Northern Hard Maple

#### SUBFLOOR CONSTRUCTION

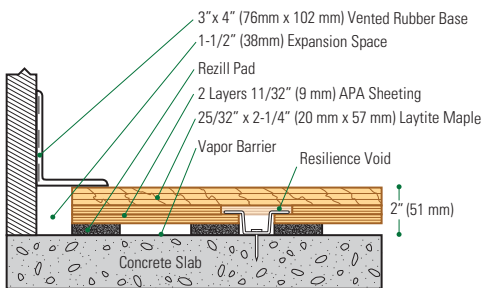
Manufactured Pre-Assembled Plywood Panels.

#### RESILIENCE

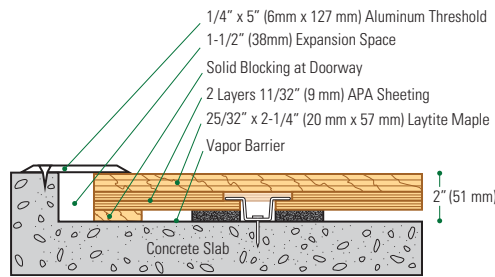
Rezill Pads for Excellent Resilient Life and Loading

**Slab Depression:** 25/32" (20 mm) flooring - 2" (51 mm) • 33/32" (26 mm) flooring - 2 1/4" (57 mm)

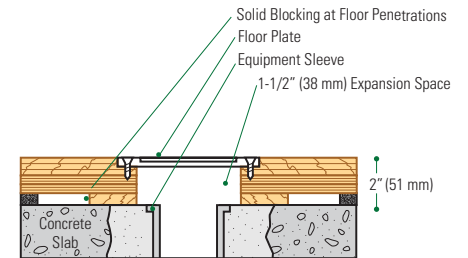
#### Wall Base Detail



#### Threshold Detail (Optional Accessory)



#### Equipment Detail (Optional Accessory)



**Manufacturing:**  
**ISO 9001:2008**  
 CERTIFIED  
**ISO 14001:2004**  
 CERTIFIED



**Recycled Contribution:**  
 RezillChannel-01 Subfloor System Includes Components with Recycled Content



**Testing Laboratory:**  
 United States Sports Surfacing Laboratory



**Certified Testing:**  
 ISSS Scientific Body Membership



**Green Status**  
 Managed Forests, Certification Available



**Environmental Product Declaration**  
 The First Sports Floor Manufacturer to Publish UL Certified Product-Specific Environmental Performance In Compliance with LEED V.4