



**CONNOR SPORTS**

**HARDWOOD  
SYSTEMS**

**RETROFLEX™**

**FLOATING SYSTEM**

CERTIFIED  
BY THESE  
LEADERS  
IN SPORT



[connorsports.com/hardwood](http://connorsports.com/hardwood)

# RETROFLEX™

## FLOATING SYSTEM

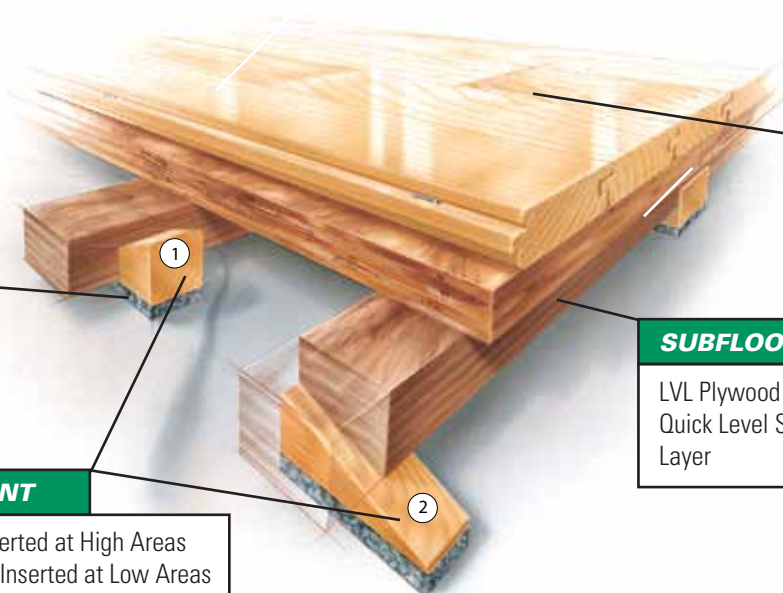
Connor Sports • 800.283.9522 • 847.290.9020 • info@connorsports.com • connorsports.com/hardwood



RetroFlex provides a manner to address uneven substrate surfaces often found in retrofit installations, thereby eliminating the expensive approach of concrete leveling and grinding.

Resilient Rezill pads are incorporated into leveling blocks for good shock absorption value.

### RETROFLEX FLOATING SYSTEM



**RESILIENCE**  
Rezill Pads for Excellent Resilient Life and Loading

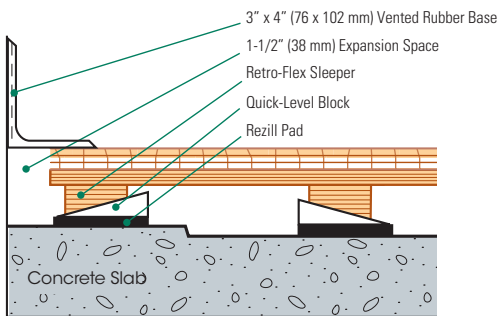
**QUICK-LEVEL ADJUSTMENT**  
1-Quick-Level Block, Minimally Inserted at High Areas  
2-Quick-Level Block, Substantially Inserted at Low Areas

**FLOORING**  
MFMA Northern Hard Maple

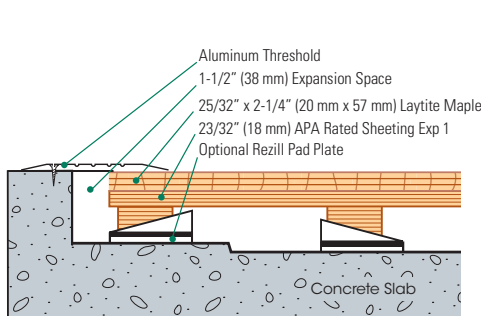
**SUBFLOOR CONSTRUCTION**  
LVL Plywood Sleeper with Specially Machined Quick Level Slots and Site Attached Plywood Layer

**Slab Depression: 23/32" (18 mm) Plywood: 25/32" (20 mm) flooring - 3 1/4" (83 mm) Plus, 33/32" (26 mm) flooring - 3 1/2" (89 mm) Plus  
15/32" (12 mm) plywood: 25/32" (20 mm) flooring - 3" (76 mm) Plus, 33/32" (26 mm) flooring - 3 1/4" (83 mm) Plus**

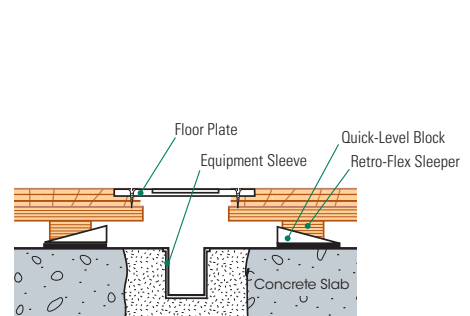
#### Wall Base Detail



#### Threshold Detail (Optional Accessory)



#### Equipment Detail (Optional Accessory)



**Manufacturing:**  
ISO 9001:2008  
CERTIFIED  
ISO 14001:2004  
CERTIFIED



**Testing Laboratory:**  
United States Sports  
Surfacing Laboratory



**Certified Testing:**  
ISSS Scientific  
Body Membership



**Green Status**  
Managed Forests,  
Certification Available



**Environmental Product Declaration**  
The First Sports Floor Manufacturer to Publish UL  
Certified Product-Specific Environmental  
Performance In Compliance with LEED V.4