



CONNOR® SPORTS

**HARDWOOD
SYSTEMS**

**ANCHORED
REZILLSLEEPER DIN™**

FIXED RESILIENT SYSTEM

CERTIFIED
BY THESE
LEADERS
IN SPORT



connorsports.com/hardwood

ANCHORED REZILLSLEEPER DIN™

FIXED RESILIENT SYSTEM

Connor Sports • 800.283.9522 • 847.290.9020 • info@connorsports.com • connorsports.com/hardwood



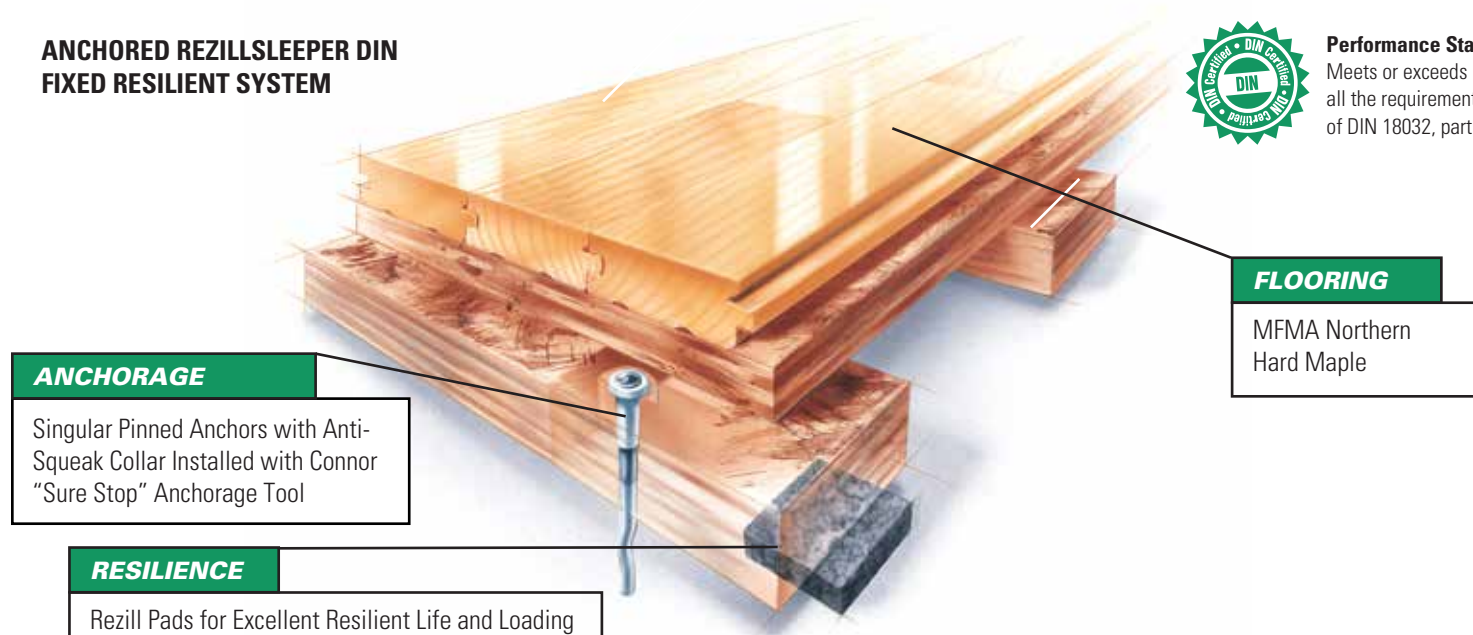
Anchored RezillSleeper DIN incorporates sound UL grade plywood sleepers with Rezill pad resilience, supporting an upper subfloor layer.

ARS DIN provides the ability to adjust profile height to meet retrofit dimensions without compromising athletic performance values.

ANCHORED REZILLSLEEPER DIN FIXED RESILIENT SYSTEM

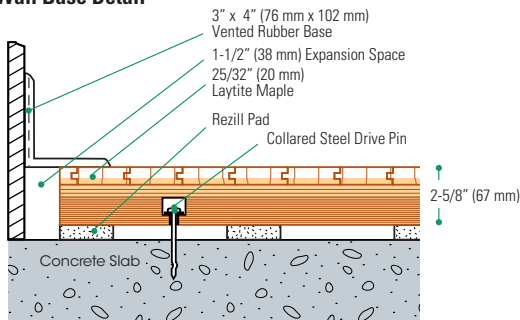


Performance Status:
Meets or exceeds
all the requirements
of DIN 18032, part 2

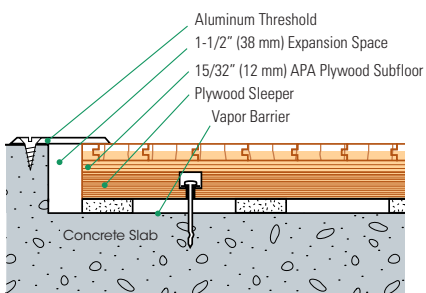


Slab Depression: 25/32" (20 mm) flooring - 2 5/8" (67 mm) • 33/32" (26 mm) flooring - 2 7/8" (73 mm)

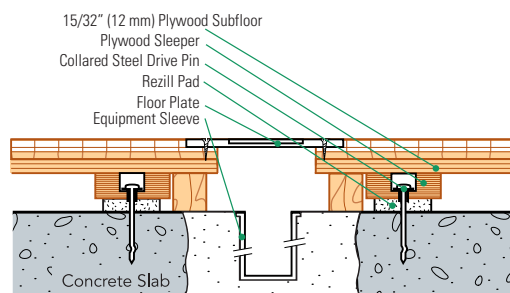
Wall Base Detail



Threshold Detail (Optional Accessory)



Equipment Detail (Optional Accessory)



Manufacturing:
ISO 9001:2008
CERTIFIED
ISO 14001:2004
CERTIFIED



Recycled Contribution:
Anchored RezillSleeper DIN Subfloor System includes components with recycled content



Testing Laboratory:
United States Sports Surfacing Laboratory



Certified Testing:
ISSS Scientific Body Membership



Green Status
Managed Forests, Certification Available



Environmental Product Declaration
The First Sports Floor Manufacturer to Publish UL Certified Product-Specific Environmental Performance In Compliance with LEED V.4